



FITTING INSTRUCTIONS CP0573/CP0558 AERO CRASH PROTECTORS



THIS KIT CONTAINS THE ITEMS PICTURED AND LABELLED OVER PAGE.

SOME PARTS MAY BE SHOWN FOR CLARITY OF INSTRUCTIONS ONLY.

DO NOT PROCEED UNTIL YOU ARE SURE ALL PARTS ARE PRESENT.

PLEASE READ ALL INSTRUCTIONS BEFORE PROCEEDING.

**IF IN ANY DOUBT WHEN FITTING OUR PRODUCTS, CONSULT ONE OF OUR DEALERS
OR HAVE FITTED BY A QUALIFIED TECHNICIAN.**

PLEASE NOTE THAT THE WAY THE KIT IS PACKED DOES NOT NECESSARILY REPRESENT THE WAY OF
MOUNTING TO THE BIKE.

IN THE EVENT OF RUBBER WASHERS BEING USED TO HOLD COMPONENTS ONTO BOLTS,
THESE RUBBER WASHERS CAN BE THROWN AWAY.

DIGITAL COPIES OF THESE INSTRUCTIONS ARE AVAILABLE FROM:

WWW.RG-RACING.COM

R&G Racing

Unit 1, Shelley's Lane, East Worldham, Alton, Hampshire, GU34 3AQ

Tel: +44 (0)1420 89007 Fax: +44 (0)1420 87301 www.rg-racing.com Email: info@rg-racing.com



<u>TOOLS REQUIRED</u>	<u>GENERAL TORQUE SETTINGS</u>
<ul style="list-style-type: none"> • SOCKET SET/ WRENCH • TORQUE WRENCH (UP TO 50Nm) • SUITABLE SUPPORT JACK • ALLEN KEY SET 	<p>M4 BOLT = 8Nm</p> <p>M5 BOLT = 12Nm</p> <p>M6 BOLT = 15Nm</p> <p>M8 BOLT = 20Nm</p> <p>M10 BOLT = 40Nm</p> <p>M12 BOLT = 40Nm</p>

LEGEND FOR UNIVERSAL ITEMS IN CP0573 AND CP0558

ITEM NO.	DESCRIPTION	QTY
ITEM 1	SMW0252 LHS BRACKET	1
ITEM 2	SMW0253 RHS BRACKET	1
ITEM 3	S1474 CRASH PROTECTOR SPACER LHS/RHS	2
ITEM 4	S0242 LHS/RHS FRONT SPACER	2
ITEM 5	S1091 SPACER LHS REAR	1
ITEM 6	S1512 SPACER RHS REAR	1
ITEM 7	M10X1.25X40MM HEX HEAD BOLT LHS REAR	1
ITEM 8	M10X1.25X45MM HEX HEAD BOLT RHS REAR	1
ITEM 9	M12X1.25X80MM HEX HEAD BOLT LHS/RHS FRONT	2
ITEM 10	M8X1.25X25MM COUNTERSUNK BOLT	4
ITEM 11	M10X20MM WASHER	4
ITEM 12	M12X20MM WASHER	2
ITEM 13	BC0002 BOBBING CAP	2
ITEM 14	NC0001 M10 HEX HEAD BOLT CAP	2
ITEM 15	NC0002 M12 HEX HEAD BOLT CAP	2



LEGEND FOR KIT SPECIFIC ITEMS

CP0573 FOR GSX-8R

ITEM 16	B0472 WITH CS449 CRASH PROTECTOR WITH COMP SLEVE	2
ITEM 17	M10X1.5X30MM HEX HEAD BOLT	2

CP0558 FOR V-STROM 800 RANGE

ITEM 18	B0061 WITH CS341 CRASH PROTECTOR WITH COMP SLEVE	2
ITEM 19	M10X1.5X50MM HEX HEAD BOLT	2

AERO-STYLE CRASH PROTECTOR ORIENTATION



R&G Racing

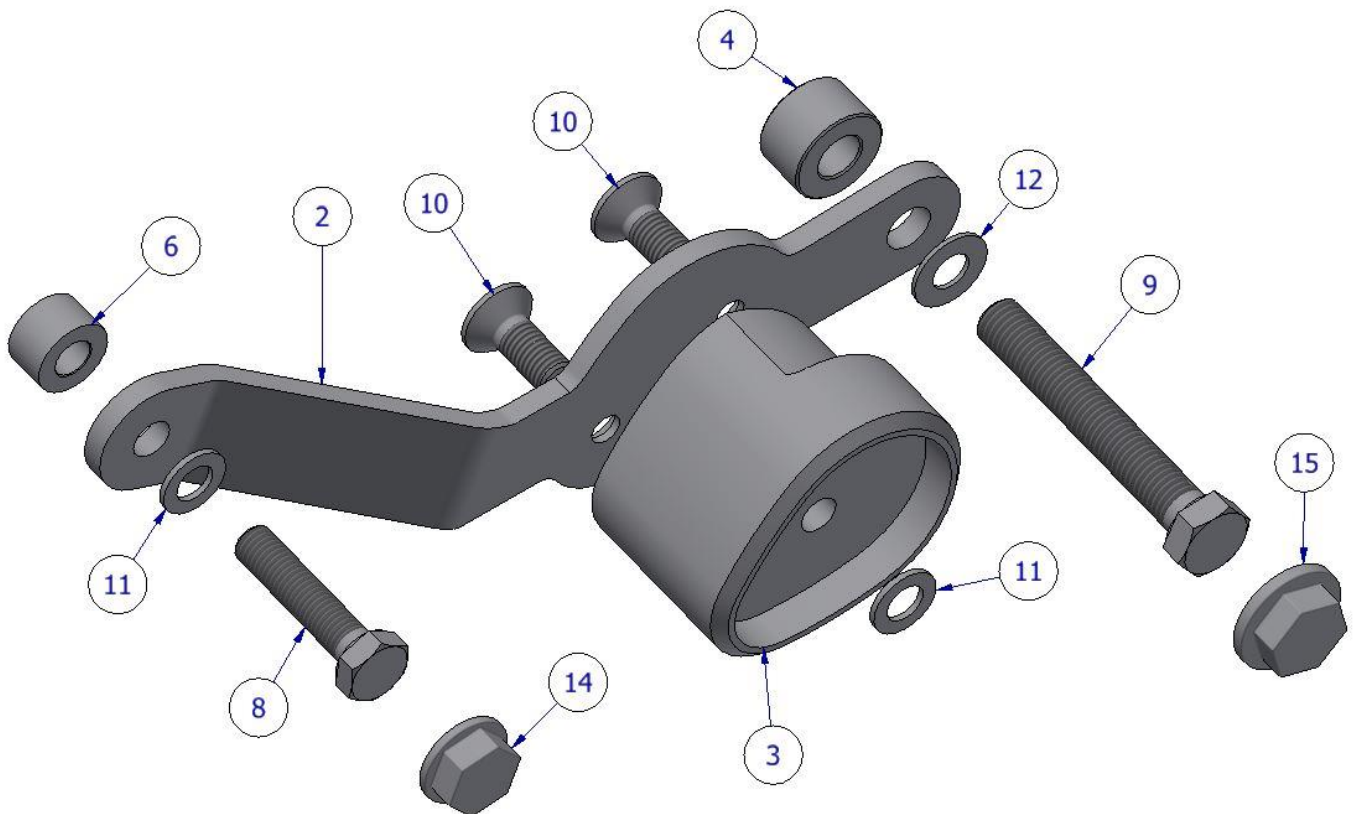
Unit 1, Shelley's Lane, East Worldham, Alton, Hampshire, GU34 3AQ

Tel: +44 (0)1420 89007 Fax: +44 (0)1420 87301 www.rg-racing.com Email: info@rg-racing.com



LHS & RHS EXPLODED ASSEMBLY VIEW

RHS



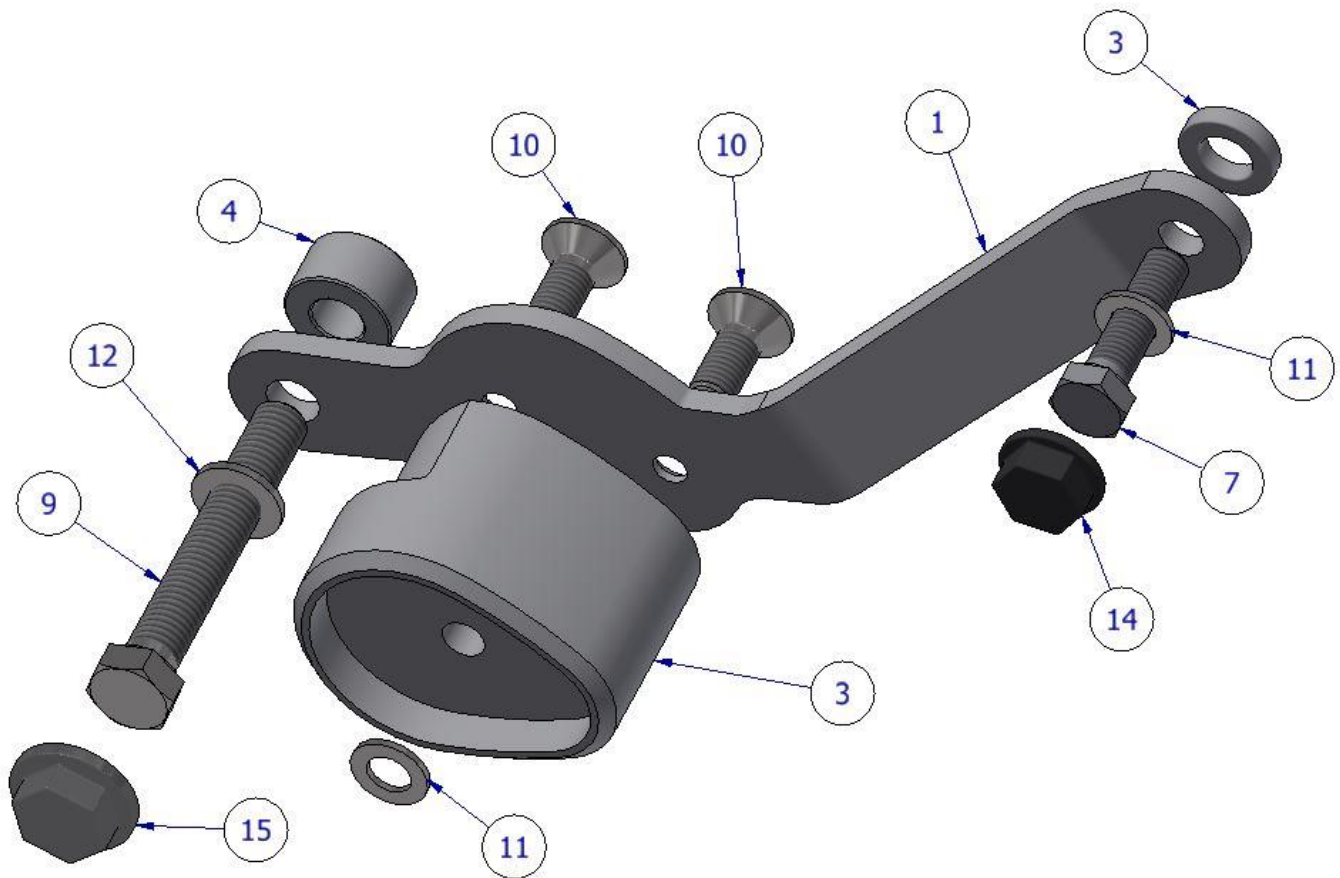
R&G Racing

Unit 1, Shelley's Lane, East Worldham, Alton, Hampshire, GU34 3AQ

Tel: +44 (0)1420 89007 Fax: +44 (0)1420 87301 www.rg-racing.com Email: info@rg-racing.com



LHS



BOBBINS FOR BOTH KITS



FITTING PICTURES

FITTING INSTRUCTIONS

Before removing engine bolts, ensure the bike is upright and supported by a suitable engine stand or jack placed under the sump of the motorbike to support the partial weight of the engine, this will prevent the engine from moving during fitting. DO NOT REMOVE MORE THAN 1 ENGINE BOLT AT ANY TIME.

PREPARATION:

- Place a suitable jack beneath the engine in a central position using a piece of wood between the jack and engine.
- Apply very light pressure to the underside of the engine to support the engine during the fitting process.
- Remove LHS/ RHS fairings.

Assemble the crash protectors before removing the engine bolts to limit the amount of time the engine is partially un-supported.

INSTALLATION:

Please note: *Torque of the engine/bobbin bolts should be checked at regular intervals when doing routine maintenance/servicing.*

ISSUE 1 - 05/07/2024 (MH)

CONSUMER NOTICE

The catalogue description and any exhibition of samples are only broad indications of the Products and R&G may make design changes which do not diminish their performance or visual appeal and supplying them in such state shall conform to the order. The Buyer acknowledges no representation or warranty (other than as to title) has been given or will apply to the Products other than those in R&G's order or confirmation and the Buyer confirms it has chosen the Products as being of merchantable quality and suitable for its particular purposes. Where R&G fits the Products or undertakes other services it shall exercise reasonable skill and care and rectify any fault free of charge unless the workmanship has been disturbed. The Buyer is responsible for ensuring that the warranty on the motorcycle is not affected by the fitting of the Products. On return of any defective Products R&G shall at its option either supply a replacement or refund the purchase money but shall not be liable if the Products have been modified or used or maintained otherwise than in accordance with R&G's or manufacturer's instructions and good engineering practice or if the defect arises from accident or neglect. Other than identified above and subject to R&G not limiting its liability for causing death

R&G Racing

Unit 1, Shelley's Lane, East Worldham, Alton, Hampshire, GU34 3AQ

Tel: +44 (0)1420 89007 Fax: +44 (0)1420 87301 www.rg-racing.com Email: info@rg-racing.com



and personal injury, it shall not be liable for indirect or consequential loss and otherwise its liability shall be limited to the amounts paid by the Buyer for the Products or the fitting or service concerned. These terms do not affect the Buyer's statutory rights.

R&G RACING RETURNS POLICY (NON-FAULTY GOODS)

Returns must be pre-authorised (if not pre-authorised the return will be rejected). Goods may only be returned direct to us if they were purchased direct from us (customer must prove if necessary). Otherwise to be returned to original vendor. Goods must be in re-sellable condition, in the opinion of R&G Racing. All returns are subject to a 25% restocking and handling fee (25% of the gross value exc. P&P – at the prevailing price at time of purchase). The customer must pay any and all carriage charges. No returns of discontinued products, unless within 14 days of purchase. This policy does not affect your statutory rights and does not refer to faulty goods.

R&G Racing

Unit 1, Shelley's Lane, East Worldham, Alton, Hampshire, GU34 3AQ

Tel: +44 (0)1420 89007 Fax: +44 (0)1420 87301 www.rg-racing.com Email: info@rg-racing.com