



**MODEL** KTM 690 SM

**YEAR** 2007-->

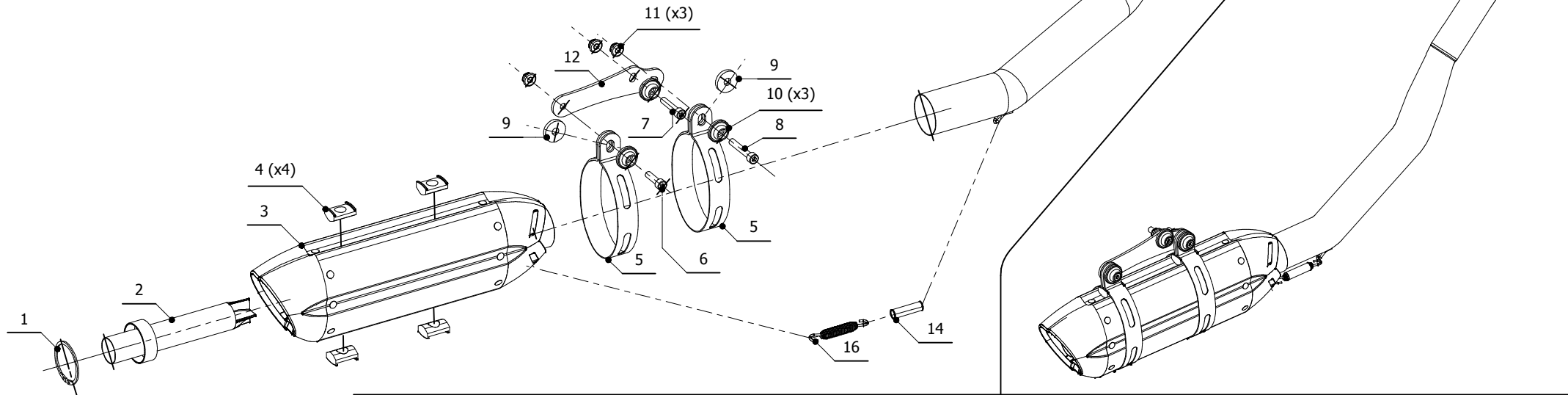
**LINE** POWER

**MUFFLER** SUONO

**SCHEMATIC**

**ELENCO PARTI / PARTS LIST**

#	QTÀ / QTY	DESCRIZIONE / DESCRIPTION	CODICE / CODE
1	1	Anello Seger / Seger ring	50.73.218.1
2	1	Db Killer forato / Drilled DB killer	50.DK.025.0
3	1	Silenziatore / Muffler	SUONO
4	4	Tassello grande / Rubber big block	50.73.203.1
5	2	Staffa in carbonio / Carbon fiber bracket	50.SS.180.1
6	1	Vite M8x30 / Screw M8x30	50.73.219.1
7	1	Vite M8x40 / Screw M8x40	50.73.075.1
8	1	Vite M8x50 / Screw M8x50	50.73.074.1
9	2	Rondella in gomma / Rubber washer	50.73.227.1
10	3	Rondella in alluminio nera / Black aluminium washer	50.73.221.1
11	3	Dado 8 MA flangiato / Flanged nut 8 MA	50.73.052.1
12	1	Staffa / Bracket	50.SS.226.1
13	1	Tubo di raccordo / Link pipe	98XKT0001
14	2	Tubo in gomma per molla / Rubber pipe for spring	50.73.210.1
15	1	Molla lunga / Long spring	50.71.080.1
16	1	Molla media / Middle spring	50.73.359.1



**APPLICAZIONI / APPLICATIONS**

CODICE / CODE	TUBO / PIPE	SILENZIATORE / MUFFLER	FASCETTA / CLAMP	CODICE OMOL. / HOMOL. CODE
X.KT.0001.L7	INOX / ST. STEEL	INOX (COPPE CARBONIO) / ST. STEEL (CARBON CAPS)	CARBONIO / CARBON FIBER	ME040 e9 1308
X.KT.0001.L9	INOX / ST. STEEL	CARBONIO (COPPE CARBONIO) / CARBON (CARBON CAPS)	CARBONIO / CARBON FIBER	ME040 e9 1308