



**FITTING INSTRUCTIONS FOR BRG0025SS BRANDED RADIATOR  
GUARD  
FOR APRILIA TUONO 660 2021 AND RS 660 2021-**



**THIS KIT CONTAINS THE ITEMS PICTURED AND LABELLED OVER PAGE.**

SOME PARTS MAY BE SHOWN FOR CLARITY OF INSTRUCTIONS ONLY.

DO NOT PROCEED UNTIL YOU ARE SURE ALL PARTS ARE PRESENT.

**PLEASE READ ALL INSTRUCTIONS BEFORE PROCEEDING.**

**IF IN ANY DOUBT WHEN FITTING OUR PRODUCTS, CONSULT ONE OF  
OUR DEALERS OR HAVE FITTED BY A QUALIFIED TECHNICIAN.**

PLEASE NOTE THAT THE WAY THE KIT IS PACKED DOES NOT NECESSARILY REPRESENT THE  
WAY OF MOUNTING TO THE BIKE.

IN THE EVENT OF RUBBER WASHERS BEING USED TO HOLD COMPONENTS ONTO BOLTS,  
THESE RUBBER WASHERS CAN BE THROWN AWAY.

**DIGITAL COPIES OF THESE INSTRUCTIONS ARE AVAILABLE FROM:**

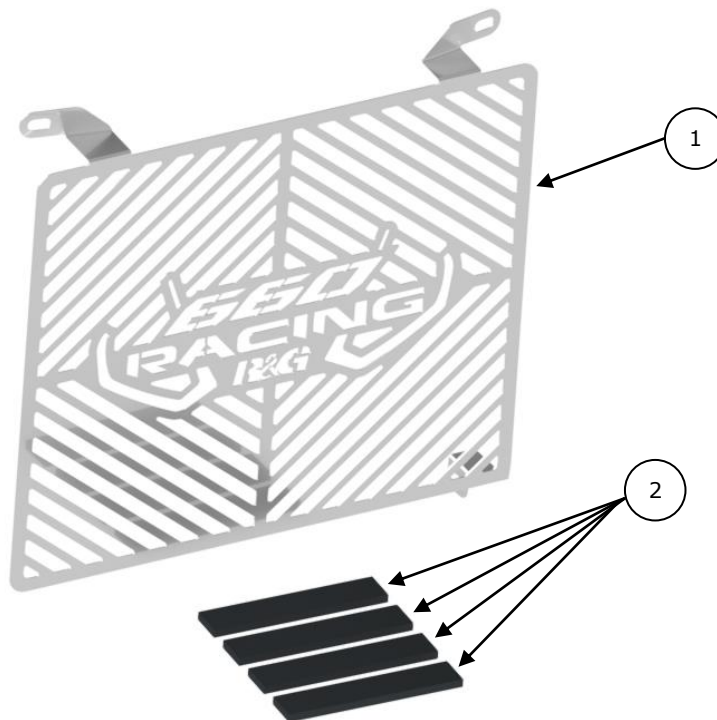
[WWW.RG-RACING.COM](http://WWW.RG-RACING.COM)



<b><u>TOOLS REQUIRED</u></b>	<b><u>GENERAL TORQUE SETTINGS</u></b>
<ul style="list-style-type: none"> <li>• Socket and ratchet set to include 8mm and 10mm A/F or spanners.                             <ul style="list-style-type: none"> <li>• Set of metric Allen keys.</li> <li>• Flat bladed screwdriver.</li> </ul> </li> </ul>	<p>M4 BOLT = 8Nm                      M5 BOLT = 12Nm                      M6 BOLT = 15Nm                      M8 BOLT = 20Nm                      M10 BOLT = 40Nm                      M12 BOLT = 40Nm</p>

**LEGEND**

<b>ITEM NO.</b>	<b>DESCRIPTION</b>	<b>QTY</b>
ITEM 1	BRANDED RADIATOR GUARD (BRG0025SS)	1
ITEM 2	SELF ADHESIVE FOAM x 100mm LONG	4





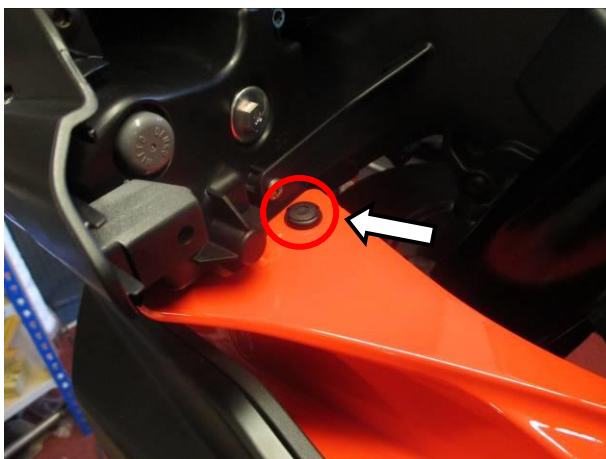
**FITTING PICTURES (Aprilia Tuono 660 2021)**



**Picture 1**



**Picture 2**



**Picture 3**



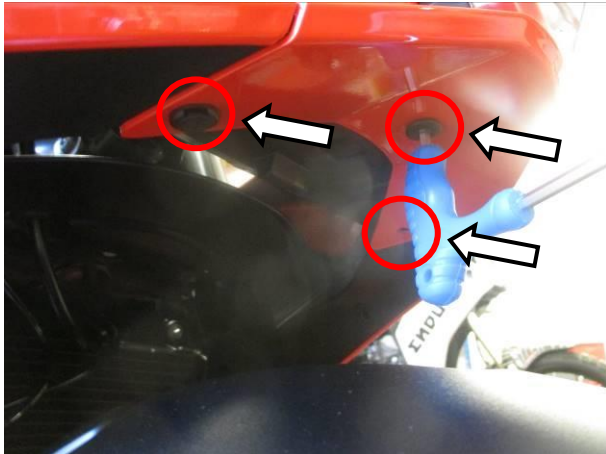
**Picture 4**



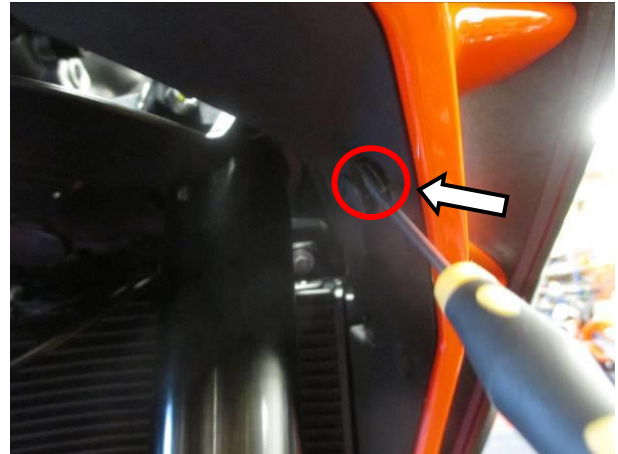
**Picture 5**



**Picture 6**



**Picture 7**



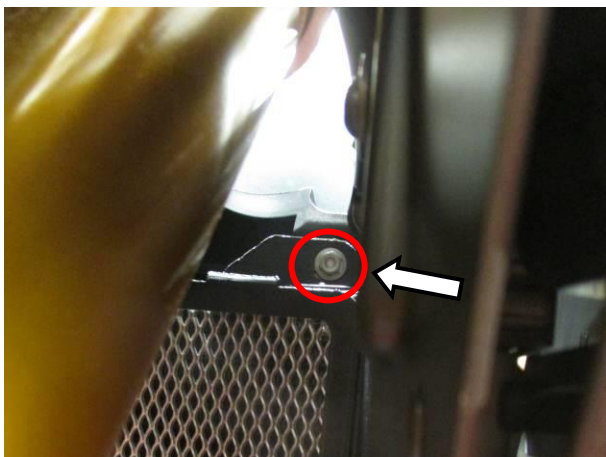
**Picture 8**



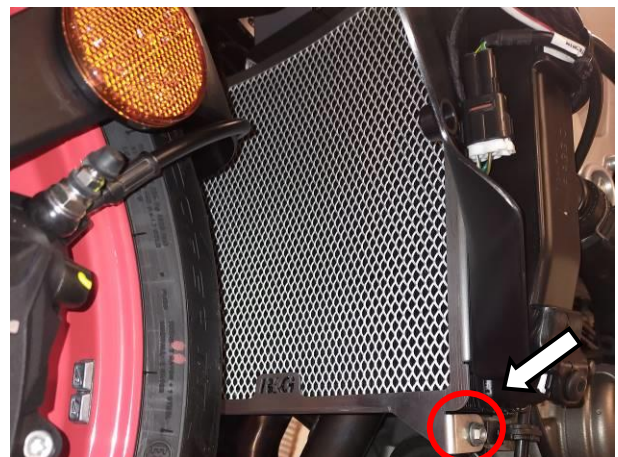
**Picture 9**



**Picture 10**



**Picture 11**



**Picture 12**



**FITTING PICTURES (Aprilia RS 660 2021)**



**Picture 13**



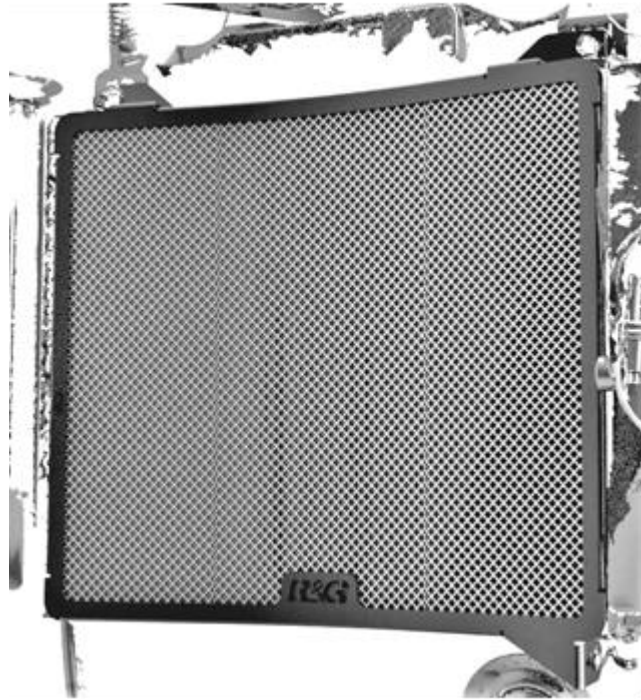
**Picture 14**



**Picture 15**



**Picture 16**



**Picture 19**

## **FITTING INSTRUCTIONS**

### **If fitting this to the Aprilia Tuono 660 2021-**

- Remove the 3 bolts located near the dash in **Picture 1**, repeat for both sides.
- Remove the plastic infill panel shown in **Picture 2**, repeat for both sides.
- Using a flat-head bladed screwdriver, remove the clip shown in **Picture 3**, repeat for both sides.
- Remove the 2 bolts underneath the headlight, shown in **Picture 4**.
- Now, remove the 2 bolts which hold on the side fairing as shown in **Picture 5** and **Picture 6**, repeat for both sides.
- Using a flat-head bladed screwdriver, remove the clips shown in **Picture 7**.
- Release the plastic clip as shown in **Picture 8**.
- The side fairings can now be removed, repeat for both sides.

R&G



- Remove the bolt shown in **Picture 9**, repeat for both sides.
- To take off the belly pan, remove the 2 bolts shown in **Picture 10**.
- Remove the 2 bolts at the top of the radiator as shown in **Picture 11**.
- Remove the lower mounting bolt for the radiator as shown in **Picture 12**.
- Cut the self-adhesive foam strips to size and place on the rear facing outer edge of the radiator guard.

**Note:**

*Ensure radiator guard surface is free of dust & oil for optimum adhesion.*

- Offer up the R&G radiator guard and re-insert the 2 upper mounting bolts and the 1 lower mounting bolt.
- Make sure the radiator guard is in the correct position before tightening the bolts to their required torque setting.
- To-refit all fairings and in-fill panels, follow the steps above in the reverse order.

**If fitting this to the Aprilia RS 660 2021-**

- On the right-hand side front fairing of the motorcycle you will see a small panel shown in **Picture 13**.
- Remove the bolt and lift the panel upwards out of its recess shown in **Picture 13**.
- Now that the right-hand side top mount is accessible, remove the bolt shown in **Picture 14**.
- The top left-hand side mount can be removed using the same tools as the right-hand side mount removal.
- Remove the bolt shown in **Picture 15**.
- Above the horn the lower radiator mount is visible.
- Using a spanner to stop the nut from rotating on the back of the bolt, remove the bolt shown in **Picture 16**.
- Cut the self-adhesive foam strips to size and place on the rear facing outer edge of the radiator guard.

**Note:**

*Ensure radiator guard surface is free of dust & oil for optimum adhesion.*

- Offer up the R&G radiator guard and re-insert the 2 upper mounting bolts and the 1 lower mounting bolt.
- Make sure the radiator guard is in the correct position before tightening the bolts to their required torque setting.
- To-refit all fairings and in-fill panels, follow the steps above in the reverse order.

ISSUE 1 - 28/05/2021 - (AO)

**CONSUMER NOTICE**

The catalogue description and any exhibition of samples are only broad indications of the Products and R&G may make design changes which do not diminish their performance or visual appeal and supplying them in such state shall conform to the order. The Buyer acknowledges no representation or warranty (other than as to title) has been given or will apply to the Products other than those in R&G's order or confirmation and the Buyer confirms it has chosen the Products as being of merchantable quality and suitable for its particular purposes. Where R&G fits the Products or undertakes other services it shall exercise reasonable skill and care and rectify any fault free of charge unless the workmanship has been disturbed. The Buyer is responsible for ensuring that the warranty on the motorcycle is not affected by the fitting of the Products. On return of any defective Products R&G shall at its option either supply a replacement or refund the purchase money but shall not be liable if the Products have been modified or used or maintained otherwise than in accordance with R&G's or manufacturer's instructions and good engineering practice or if the defect arises from accident or neglect. Other than identified above and subject to R&G not limiting its liability for causing death and personal injury, it shall not be liable for indirect or consequential loss and otherwise its liability shall be limited to the amounts paid by the Buyer for the Products or the fitting or service concerned. These terms do not affect the Buyer's statutory rights.

**R&G RETURNS POLICY (NON-FAULTY GOODS)**

Returns must be pre-authorized (if not pre-authorized the return will be rejected). Goods may only be returned direct to us if they were purchased direct from us (customer must prove if necessary). Otherwise to be returned to original vendor. Goods must be in re-sellable condition, in the opinion of R&G. All returns are subject to a 25% restocking and handling fee (25% of the gross value exc. P&P – at the prevailing price at time of purchase). The customer must pay any and all carriage charges. No returns of discontinued products, unless within 14 days of purchase. This policy does not affect your statutory rights and does not refer to faulty goods.

R&G

Unit 1, Shelley's Lane, East Worldham, Alton, Hampshire, GU34 3AQ

Tel: +44 (0)1420 89007 Fax: +44 (0)1420 87301 [www.rg-racing.com](http://www.rg-racing.com) Email: [info@rg-racing.com](mailto:info@rg-racing.com)





**NOTICE DE MONTAGE POUR BRG0025SS**  
**GRILLE DE PROTECTION RADIATEUR**  
**POUR APRILIA TUONO 660 2021 ET RS 660 2021-**



**CE KIT CONTIENT LES ARTICLES ILLUSTRÉS ET ÉTIQUETES SUR LA PAGE.**

CERTAINES PARTIES PEUVENT ÊTRE PRÉSENTES UNIQUEMENT POUR LA CLARTÉ DES INSTRUCTIONS.

NE PAS PROCÉDER AU MONTAGE TANT QUE VOUS N'ÊTES PAS SÛR QUE TOUTES LES PIÈCES SOIENT PRÉSENTES.

**VEUILLEZ LIRE TOUTES LES INSTRUCTIONS AVANT DE CONTINUER.**  
**EN CAS DE DOUTE LORS DU MONTAGE DE NOS PRODUITS, CONSULTEZ UN DE NOS REVENDEURS OU FAITES APPEL À UN TECHNICIEN QUALIFIÉ.**

VEUILLEZ NOTER QUE LA FAÇON DONT LE KIT EST EMBALLÉ NE REPRÉSENTE PAS NECESSAIREMENT LA MANIÈRE DE LE MONTER SUR LA MOTO.

SI DES RONDELLES EN CAOUTCHOUC SONT UTILISÉES POUR MAINTENIR LES COMPOSANTS SUR LES BOULONS, ELLES PEUVENT ÊTRE JETÉES.

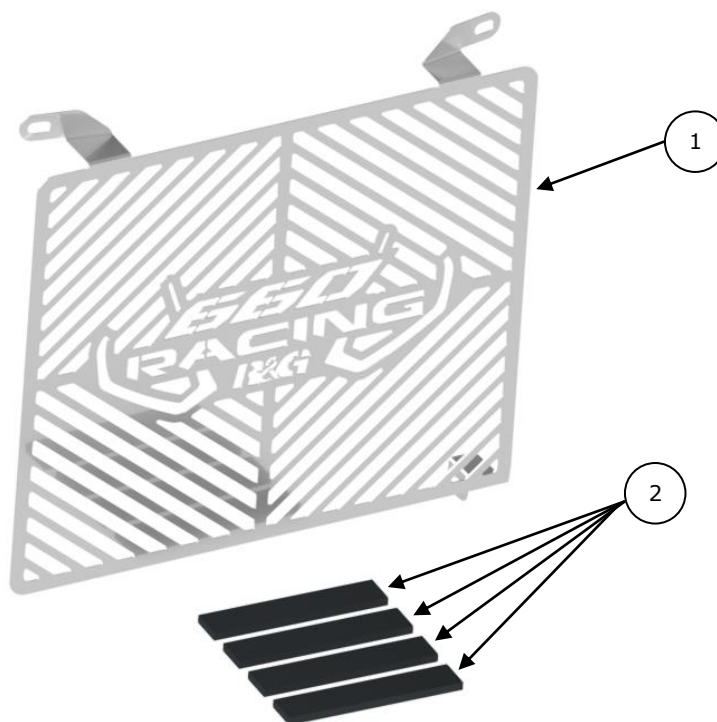
**NOTICE DISPONIBLE AU TÉLÉCHARGEMENT SUR : [WWW.RG-RACING.COM](http://WWW.RG-RACING.COM)**



<b><u>OUTILS REQUIS</u></b>	<b><u>VALEURS DE SERRAGE GÉNÉRALES</u></b>
<ul style="list-style-type: none"> <li>• Clé à cliquet + douilles 8mm et 10mm.</li> <li>• Clés Allen.</li> <li>• Tournevis cruciforme et plat.</li> </ul>	<p>M4 BOULON = 8Nm  M5 BOULON = 12Nm  M6 BOULON = 15Nm  M8 BOULON = 20Nm  M10 BOULON = 40Nm  M12 BOULON = 40Nm</p>

## **LÉGENDE**

ARTICLE NO.	DESCRIPTION	QTÉ
ARTICLE 1	GRILLE DE PROTECTION RADIATEUR (BRG0025SS)	1
ARTICLE 2	MOUSSE AUTOCOLLANTE x 100mm DE LONG	4



R&amp;G

Unit 1, Shelley's Lane, East Worldham, Alton, Hampshire, GU34 3AQ

Tel: +44 (0)1420 89007 Fax: +44 (0)1420 87301 [www.rg-racing.com](http://www.rg-racing.com) Email: [info@rg-racing.com](mailto:info@rg-racing.com)



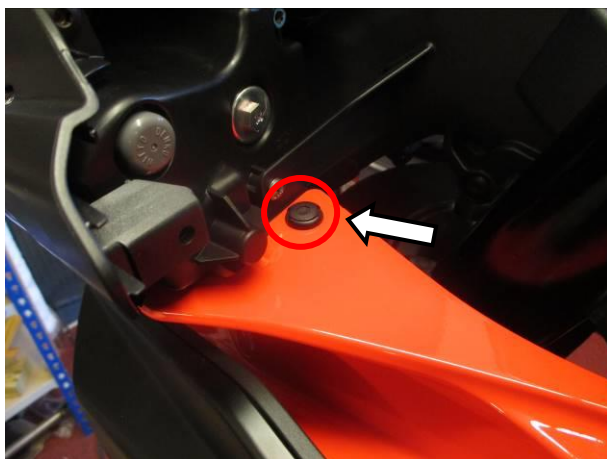
**PHOTOS DE MONTAGE (Aprilia Tuono 660 2021)**



**Photo 1**



**Photo 2**



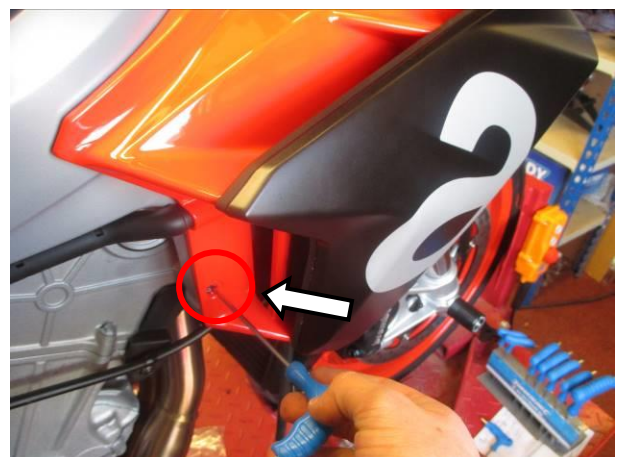
**Photo 3**



**Photo 4**



**Photo 5**



**Photo 6**

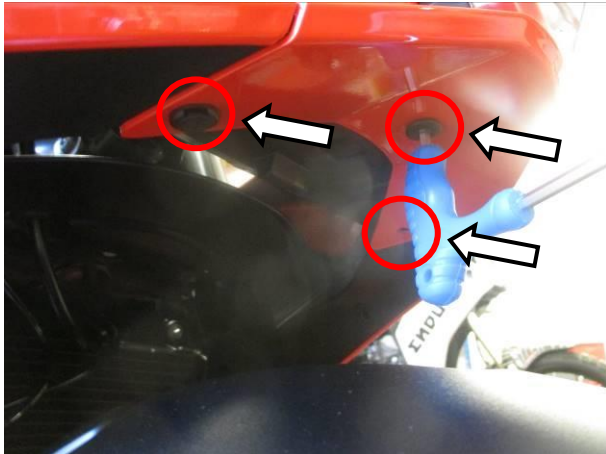


Photo 7

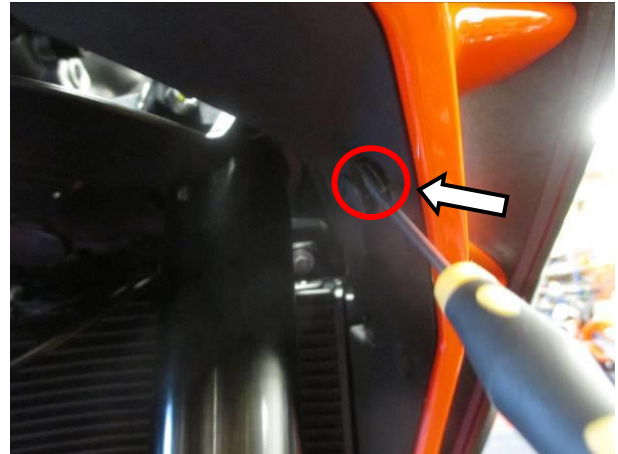


Photo 8



Photo 9



Photo 10

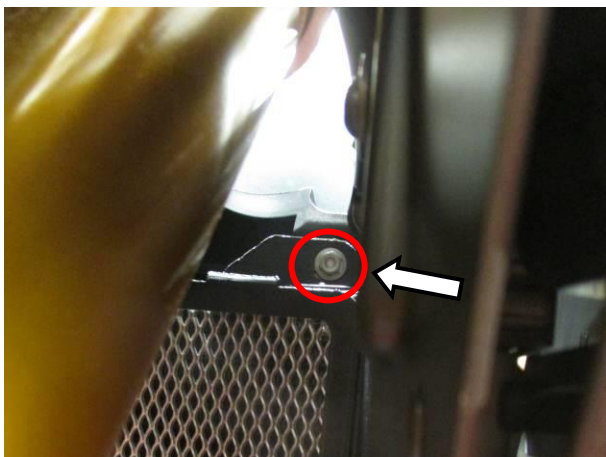


Photo 11

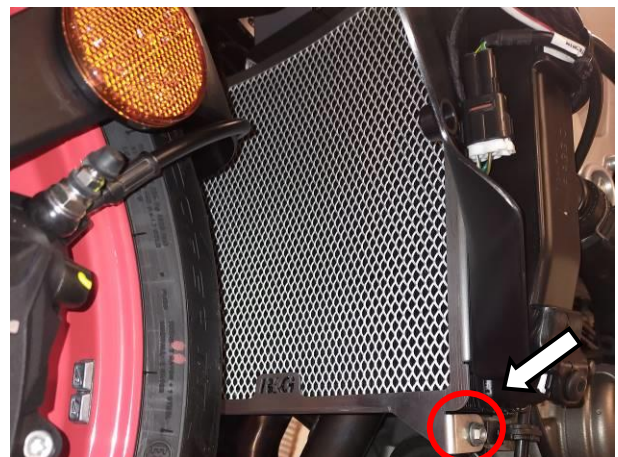


Photo 12



**PHOTOS DE MONTAGE (Aprilia RS 660 2021)**



**Photo 13**



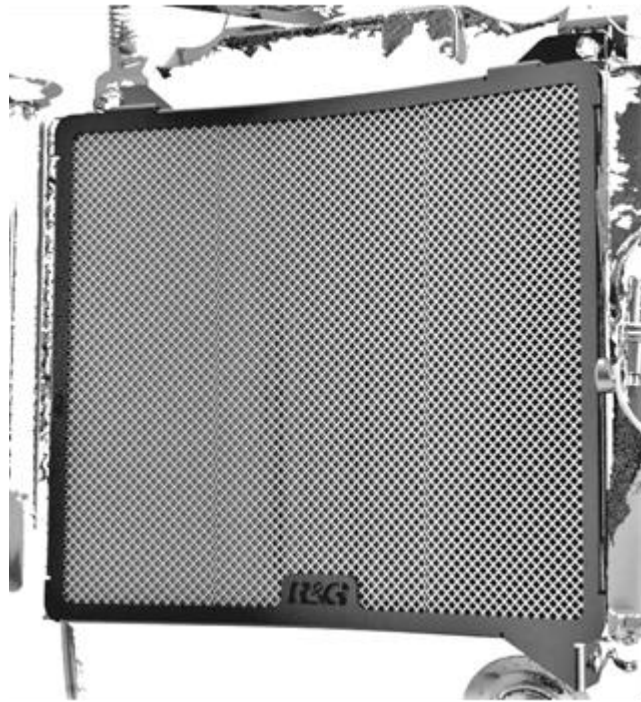
**Photo 14**



**Photo 15**



**Photo 16**



**Photo 19**

## **NOTICE DE MONTAGE**

### **Si montage sur Aprilia Tuono 660 2021-**

- Retirez les 3 boulons situés près du tableau de bord sur la photo 1, répétez pour les deux côtés.
- Retirez le panneau de remplissage en plastique illustré sur la photo 2, répétez pour les deux côtés.
- À l'aide d'un tournevis plat, retirez le clip illustré sur la photo 3, répétez pour les deux côtés.
- Retirez les 2 boulons sous le phare, comme illustré sur la photo 4.
- Maintenant, retirez les 2 boulons qui maintiennent le carénage latéral comme indiqué sur la photo 5 et la photo 6, répétez pour les deux côtés.
- À l'aide d'un tournevis plat, retirez les clips illustrés sur la photo 7.
- Relâchez le clip en plastique comme indiqué sur la photo 8.

R&G



- Les carénages latéraux peuvent maintenant être retirés, répétez pour les deux côtés.
- Retirez le boulon illustré sur la photo 9, répétez pour les deux côtés.
- Pour retirer le pan de ventre, retirez les 2 boulons illustrés sur la photo 10.
- Retirez les 2 boulons en haut du radiateur comme indiqué sur la photo 11.
- Retirez le boulon de fixation inférieur du radiateur comme indiqué sur la photo 12.
- Coupez les bandes de mousse autocollantes à la taille voulue et placez-les sur le bord extérieur orienté vers l'arrière de la protection de radiateur.

**Note:**

*Assurez-vous que la surface de protection du radiateur soit exempte de poussière et d'huile pour une adhérence optimale.*

- Montez la protection de radiateur R&G et réinsérez les 2 boulons de montage supérieurs et le boulon de montage inférieur.
- Assurez-vous que la protection du radiateur soit dans la bonne position avant de serrer les boulons à leur couple de serrage requis.
- Pour remonter tous les carénages et panneaux de remplissage, suivez les étapes ci-dessus dans l'ordre inverse.

**Si montage sur Aprilia RS 660 2021-**

- Sur le carénage avant droit de la moto, vous verrez un petit panneau illustré sur la photo 13.
- Retirez le boulon et soulevez le panneau vers le haut hors de son renforcement illustré sur la photo 13.
- Maintenant que le support supérieur droit est accessible, retirez le boulon illustré à la photo 14.
- Le support supérieur gauche peut être retiré à l'aide des mêmes outils que le support latéral droit.
- Retirez le boulon illustré sur la photo 15.
- Au-dessus du klaxon, le support de radiateur inférieur est visible.



- À l'aide d'une clé pour empêcher l'écrou de tourner à l'arrière du boulon, retirez le boulon illustré à la photo 16.
- Coupez les bandes de mousse autocollantes à la taille voulue et placez-les sur le bord extérieur orienté vers l'arrière de la protection de radiateur.

**Note:**

*Assurez-vous que la surface de protection du radiateur soit exempte de poussière et d'huile pour une adhérence optimale.*

- Montez la protection de radiateur R&G et réinsérez les 2 boulons de montage supérieurs et le boulon de montage inférieur.
- Assurez-vous que la protection du radiateur soit dans la bonne position avant de serrer les boulons à leur couple de serrage requis.
- Pour remonter tous les carénages et panneaux de remplissage, suivez les étapes ci-dessus dans l'ordre inverse.

ISSUE 1 - 28/05/2021 - (AO)

**CONSUMER NOTICE**

The catalogue description and any exhibition of samples are only broad indications of the Products and R&G may make design changes which do not diminish their performance or visual appeal and supplying them in such state shall conform to the order. The Buyer acknowledges no representation or warranty (other than as to title) has been given or will apply to the Products other than those in R&G's order or confirmation and the Buyer confirms it has chosen the Products as being of merchantable quality and suitable for its particular purposes. Where R&G fits the Products or undertakes other services it shall exercise reasonable skill and care and rectify any fault free of charge unless the workmanship has been disturbed. The Buyer is responsible for ensuring that the warranty on the motorcycle is not affected by the fitting of the Products. On return of any defective Products R&G shall at its option either supply a replacement or refund the purchase money but shall not be liable if the Products have been modified or used or maintained otherwise than in accordance with R&G's or manufacturer's instructions and good engineering practice or if the defect arises from accident or neglect. Other than identified above and subject to R&G not limiting its liability for causing death and personal injury, it shall not be liable for indirect or consequential loss and otherwise its liability shall be limited to the amounts paid by the Buyer for the Products or the fitting or service concerned. These terms do not affect the Buyer's statutory rights.

R&G

Unit 1, Shelley's Lane, East Worldham, Alton, Hampshire, GU34 3AQ  
Tel: +44 (0)1420 89007 Fax: +44 (0)1420 87301 [www.rg-racing.com](http://www.rg-racing.com) Email: [info@rg-racing.com](mailto:info@rg-racing.com)





**R&G RETURNS POLICY (NON-FAULTY GOODS)**

Returns must be pre-authorized (if not pre-authorized the return will be rejected). Goods may only be returned direct to us if they were purchased direct from us (customer must prove if necessary). Otherwise to be returned to original vendor. Goods must be in re-sellable condition, in the opinion of R&G. All returns are subject to a 25% restocking and handling fee (25% of the gross value exc. P&P – at the prevailing price at time of purchase). The customer must pay any and all carriage charges. No returns of discontinued products, unless within 14 days of purchase. This policy does not affect your statutory rights and does not refer to faulty goods.



**MONTAGEANLEITUNG FÜR BRG0025SS**  
**KÜHLERSCHUTZ MIT BRANDING**  
**FÜR APRILIA TUONO 660 2021 UND RS 660 2021-**



**ALLE KIT-TEILE SIND AUF DEN NACHFOLGENDEN SEITEN ABGEBILDET UND GEKENNZEICHNET.**

DIE ABGEBILDETEN TEILE DIENEN LEDIGLICH ZUR ERKLÄRUNG.

ÜBERPRÜFEN SIE ZUERST, DASS ALLE TEILE VORHANDEN SIND.

**LESEN SIE DIE MONTAGEANLEITUNG KOMPLETT DURCH, BEVOR SIE ANFANGEN.**

**WENN SIE BEI DER MONTAGE DIESER PRODUKTES UNSICHER SIND, BITTE EINEN UNSERER HÄNDLER KONTAKTIEREN ODER DAS KIT VON EINEM QUALIFIZIERTEN ZWEIRAD-MECHANIKER MONTIEREN LASSEN.**

DIE VERPACKUNG DER TEILE STELLT NICHT DIE REIHENFOLGE DER MONTAGE DAR.

HINWEIS FÜR KITS MIT PLASTIKUNTERLEGSCHLEIBEN AN DEN SCHRAUBEN –  
DIESE PLASTIK-UNTERLEGSCHLEIBEN WERDEN NICHT FÜR DEN EINBAU BENÖTIGT.

**EINE DIGITALE VERSION DIESER MONTAGEANLEITUNG KANN AUF FOLGENDER SEITE HERUNTERGELADEN WERDEN:**

[WWW.RG-RACING.COM](http://www.rg-racing.com)

R&G

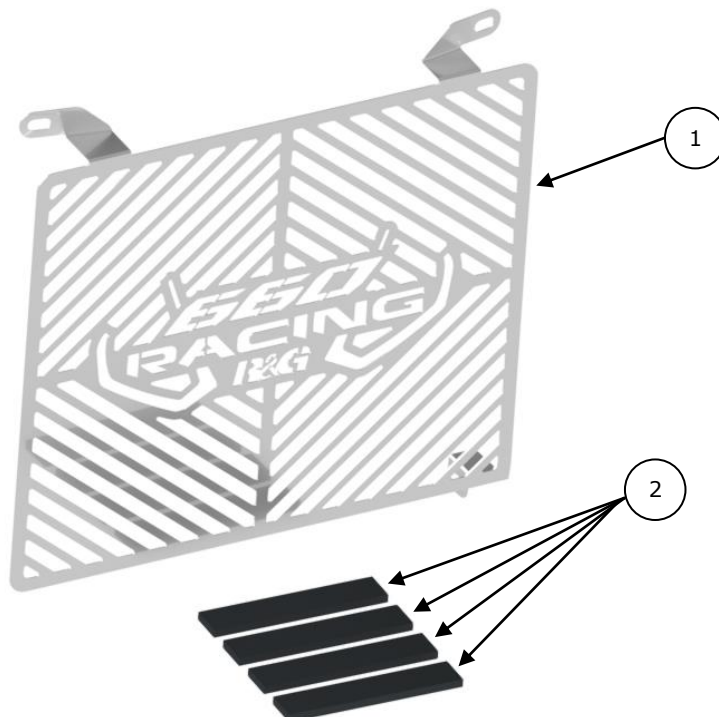
Unit 1, Shelley's Lane, East Worldham, Alton, Hampshire, GU34 3AQ  
Tel: +44 (0)1420 89007 Fax: +44 (0)1420 87301 [www.rg-racing.com](http://www.rg-racing.com) Email: [info@rg-racing.com](mailto:info@rg-racing.com)



<b>SIE BENÖTIGEN FOLGENDES WERKZEUG:</b>	<b>ALLGEM. ANZUGSDREHMOMENT</b>
<ul style="list-style-type: none"> <li>• Steckschlüsselsatz inkl. 8mm und 10mm A/F oder Schraubenschlüssel               <ul style="list-style-type: none"> <li>• Satz Inbusschlüssel</li> </ul> </li> <li>• Flachen Schraubenzieher</li> </ul>	M4 SCHRAUBE = 8Nm M5 SCHRAUBE = 12Nm M6 SCHRAUBE = 15Nm M8 SCHRAUBE = 20Nm M10 SCHRAUBE = 40Nm M12 SCHRAUBE = 40Nm

### LIEFERUMFANG

<b>ARTIKEL NR.</b>	<b>BESCHREIBUNG</b>	<b>MENGE</b>
ARTIKEL 1	KÜHLERSCHUTZ MIT BRANDING (BRG0025SS)	1
ARTIKEL 2	SELBSTKLEBENDER SCHAUMSTOFF x 100mm LÄNGE	4



R&amp;G

Unit 1, Shelley's Lane, East Worldham, Alton, Hampshire, GU34 3AQ

Tel: +44 (0)1420 89007 Fax: +44 (0)1420 87301 [www.rg-racing.com](http://www.rg-racing.com) Email: [info@rg-racing.com](mailto:info@rg-racing.com)



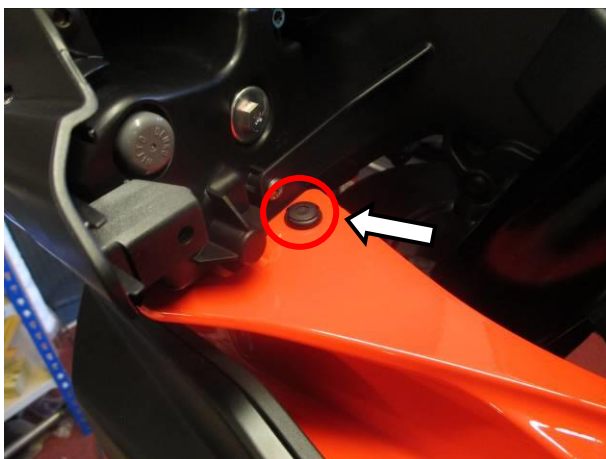
## **MONTAGE ABBILDUNGEN (Aprilia Tuono 660 2021)**



**Abbildung 1**



**Abbildung 2**



**Abbildung 3**



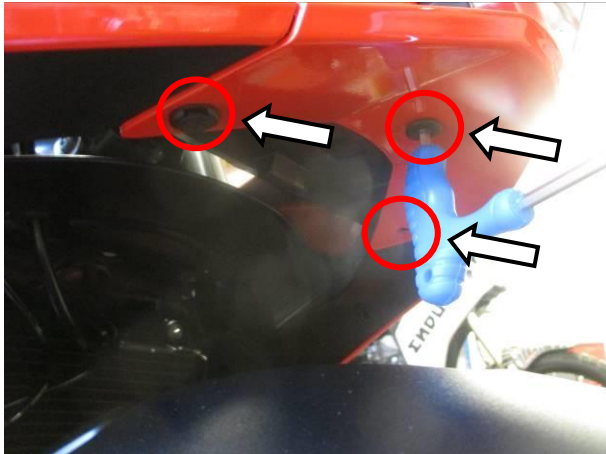
**Abbildung 4**



**Abbildung 5**



**Abbildung 6**



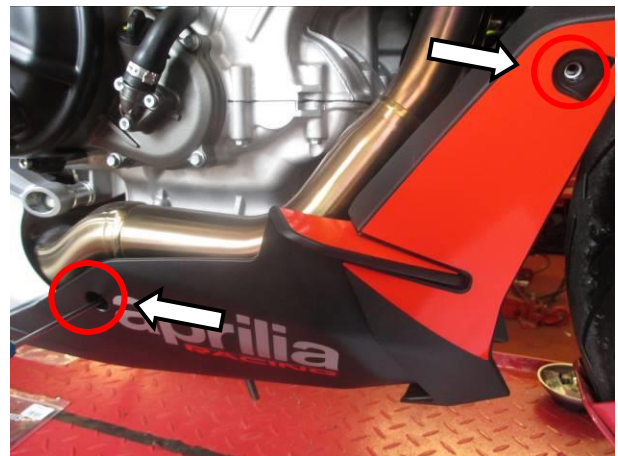
**Abbildung 7**



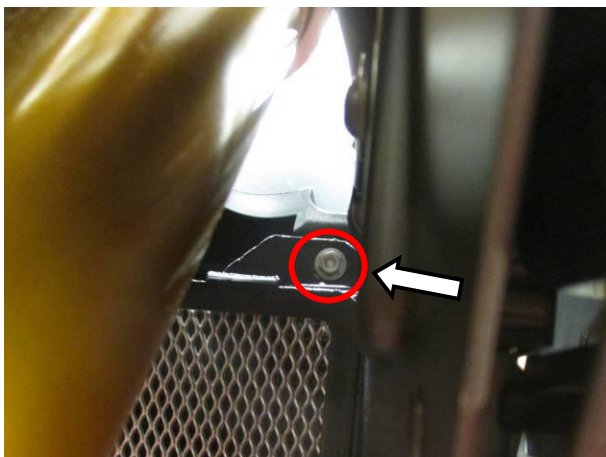
**Abbildung 8**



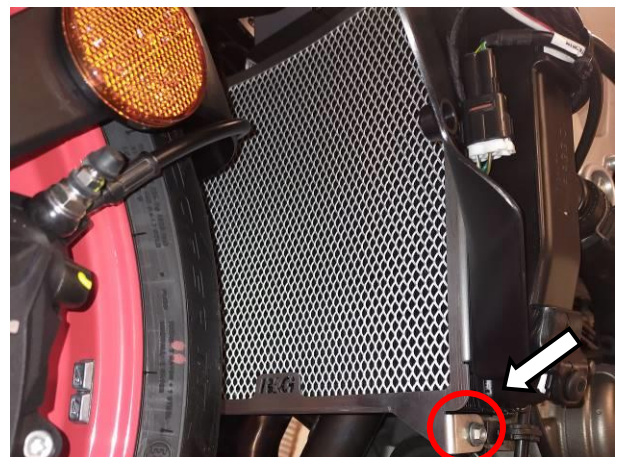
**Abbildung 9**



**Abbildung 10**



**Abbildung 11**



**Abbildung 12**



### **MONTAGE ABBILDUNGEN (Aprilia RS 660 2021)**



**Abbildung 13**



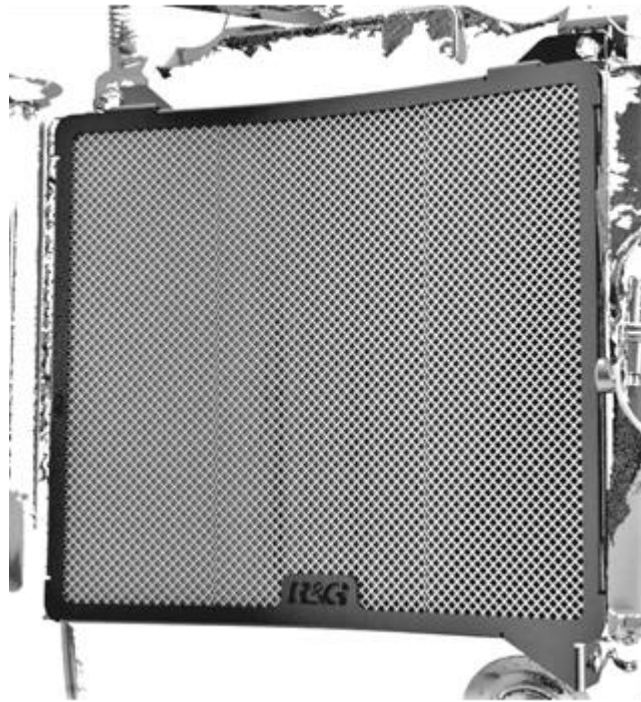
**Abbildung 14**



**Abbildung 15**



**Abbildung 16**



**Abbildung 19**

## **MONTAGEANLEITUNG**

### **Montage Modell Aprilia Tuono 660 2021-**

- Entfernen Sie die 3 Schrauben, die in **Abbildung 1** gekennzeichnet sind, an beiden Seiten des Motorrads.
- Entfernen Sie das Kunststoff-Verkleidungsteil, das in Abbildung 2 abgebildet ist – diesen Schritt an beiden Seiten des Motorrads ausführen.
- Mit Hilfe eines flachen Schraubenziehers, entfernen Sie den Clip, der in **Abbildung 3** markiert ist, sowie den Clip an der anderen Seite des Motorrads.
- Entfernen Sie die 2 Schrauben unter dem Scheinwerfer, die in **Abbildung 4** abgebildet sind.
- Nun entfernen Sie die 2 Schrauben, die die Seitenverkleidung befestigen wie in **Abbildung 5** und **Abbildung 6** abgebildet – die 2 Schrauben an der anderen Seite ebenfalls entfernen.
- Benutzen Sie einen flachen Schraubenzieher, um die Clips zu entfernen, die in **Abbildung 7** abgebildet sind.
- Lösen Sie den Kunststoff-Clip, der in **Abbildung 8** abgebildet ist.

R&G



- Entfernen Sie nun die Seitenverkleidungen an beiden Seiten des Motorrades.
- Entfernen Sie die Schraube, die in **Abbildung 9** abgebildet ist, an beiden Seiten des Motorrades.
- Um die untere Abdeckung abmontieren zu können, entfernen Sie die 2 Schrauben, die in **Abbildung 10** abgebildet sind.
- Entfernen Sie die 2 Schrauben oben am Kühler wie in **Abbildung 11** abgebildet.
- Entfernen Sie die untere Montageschraube für den Kühler wie in **Abbildung 12** abgebildet.
- Die mitgelieferten Schaumstoff-Streifen passend schneiden und an der äußeren Kante an der Rückseite des Kühlerschutzes anbringen.

**Hinweis:**

*Um eine optimale Haftung des Schaumstoffes zu bekommen, muss die Oberfläche des Kühlerschutzes frei von Staub und Öl sein.*

- Den R&G Kühlerschutz nehmen und die 2 oberen Montageschrauben sowie die untere Montageschraube wiedereinsetzen.
- Überprüfen Sie, dass der Kühlerschutz richtig positioniert ist, bevor Sie die Schrauben mit dem vorgesehenen Anzugsdrehmoment befestigen.
- Um alle Verkleidungen und Verkleidungsteile wieder zu montieren, die o.g. Schritte in umgekehrter Reihenfolge ausführen.

**Montage bei Modell Aprilia RS 660 2021-**

- An der vorderen Seitenverkleidung an der rechten Seite finden Sie ein kleines Verkleidungsteil (siehe **Abbildung 13**).
- Entfernen Sie die Schraube und heben Sie das Verkleidungsteil nach oben aus der Vertiefung wie in **Abbildung 13** abgebildet.
- Nun ist die obere Halterung an der rechten Seite zugänglich, danach entfernen Sie die Schraube, die in **Abbildung 14** abgebildet ist.
- Die obere Halterung an der linken Seite wird genauso entfernt.
- Entfernen Sie die Schraube, die in **Abbildung 15** abgebildet ist
- Oberhalb der Hupe ist die untere Halterung für den Kühler sichtbar.
- Benutzen Sie einen Schraubenschlüssel, um die Mutter hinten an der Schraube festzuhalten und entfernen Sie die Schraube, die in **Abbildung 16** abgebildet ist.
- Die mitgelieferten Schaumstoff-Streifen passend schneiden und an der äußeren Kante an der Rückseite des Kühlerschutzes anbringen.

**Hinweis:**

R&G

Unit 1, Shelley's Lane, East Worldham, Alton, Hampshire, GU34 3AQ

Tel: +44 (0)1420 89007 Fax: +44 (0)1420 87301 [www.rg-racing.com](http://www.rg-racing.com) Email: [info@rg-racing.com](mailto:info@rg-racing.com)





*Um eine optimale Haftung des Schaumstoffes zu bekommen, muss die Oberfläche des Kühlerschutzes frei von Staub und Öl sein.*

- Den R&G Kühlerschutz nehmen und die 2 oberen Montageschrauben sowie die untere Montageschraube wiedereinsetzen.
- Überprüfen Sie, dass der Kühlerschutz richtig positioniert ist, bevor Sie die Schrauben mit dem vorgesehenen Anzugsdrehmoment befestigen.
- Um alle Verkleidungen und Verkleidungsteile wieder zu montieren, die o.g. Schritte in umgekehrter Reihenfolge ausführen.

AUSGABE 1 - 28/05/2021 - (AO)

#### **CONSUMER NOTICE**

The catalogue description and any exhibition of samples are only broad indications of the Products and R&G may make design changes which do not diminish their performance or visual appeal and supplying them in such state shall conform to the order. The Buyer acknowledges no representation or warranty (other than as to title) has been given or will apply to the Products other than those in R&G's order or confirmation and the Buyer confirms it has chosen the Products as being of merchantable quality and suitable for its particular purposes. Where R&G fits the Products or undertakes other services it shall exercise reasonable skill and care and rectify any fault free of charge unless the workmanship has been disturbed. The Buyer is responsible for ensuring that the warranty on the motorcycle is not affected by the fitting of the Products. On return of any defective Products R&G shall at its option either supply a replacement or refund the purchase money but shall not be liable if the Products have been modified or used or maintained otherwise than in accordance with R&G's or manufacturer's instructions and good engineering practice or if the defect arises from accident or neglect. Other than identified above and subject to R&G not limiting its liability for causing death and personal injury, it shall not be liable for indirect or consequential loss and otherwise its liability shall be limited to the amounts paid by the Buyer for the Products or the fitting or service concerned. These terms do not affect the Buyer's statutory rights.

#### **R&G RETURNS POLICY (NON-FAULTY GOODS)**

Returns must be pre-authorized (if not pre-authorized the return will be rejected). Goods may only be returned direct to us if they were purchased direct from us (customer must prove if necessary). Otherwise to be returned to original vendor. Goods must be in re-sellable condition, in the opinion of R&G. All returns are subject to a 25% restocking and handling fee (25% of the gross value exc. P&P – at the prevailing price at time of purchase). The customer must pay any and all carriage charges. No returns of discontinued products, unless within 14 days of purchase. This policy does not affect your statutory rights and does not refer to faulty goods.

R&G

Unit 1, Shelley's Lane, East Worldham, Alton, Hampshire, GU34 3AQ

Tel: +44 (0)1420 89007 Fax: +44 (0)1420 87301 [www.rg-racing.com](http://www.rg-racing.com) Email: [info@rg-racing.com](mailto:info@rg-racing.com)