



FITTING INSTRUCTIONS FOR AB0017BK ADVENTURE BARS
KAWASAKI VULCAN S '15-



THIS KIT CONTAINS THE ITEMS PICTURED AND LABELLED BELOW.
DO NOT PROCEED UNTIL YOU ARE SURE ALL PARTS ARE PRESENT.

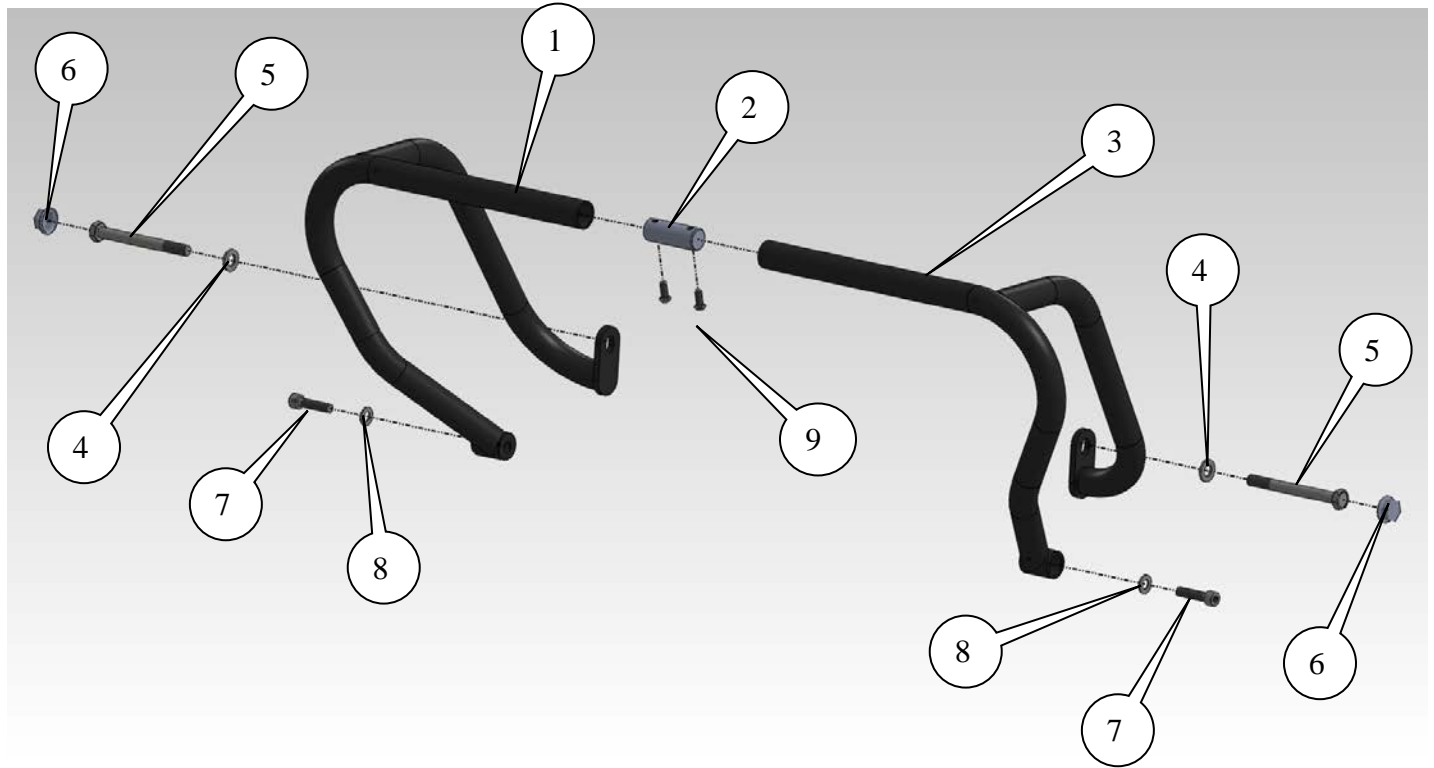
Please note that the way the kit is packed does not necessarily represent the way of mounting to the bike

THE PARTS SHOWN MAY BE REPRESENTATIVE ONLY (FOR CLARITY OF INSTRUCTIONS ONLY)

Digital copies of these instructions are available to download from www.rg-racing.com

GENERAL TORQUE SETTINGS

M4 Bolt = 8 Nm
M5 Bolt = 12 Nm
M6 Bolt = 15 Nm
M8 Bolt = 20 Nm
M10 Bolt = 40 Nm
M12 Bolt = 40 Nm
M12 Nyloc Nut = 40 Nm



LEGEND

- ITEM 1 = ADVENTURE BAR RIGHT-HAND SIDE (CB046) (x1).
- ITEM 2 = TUBE CONNECTING BLOCK (M0455) (x1).
- ITEM 3 = ADVENTURE BAR LEFT-HAND SIDE (CB045) (x1).
- ITEM 4 = M10 WASHERS (x2).
- ITEM 5 = M10 x 1.25 x 120mm LONG HEX HEAD BOLTS (x2).
- ITEM 6 = M10 RUBBER HEX HEAD CAPS (x2).
- ITEM 7 = M8 x 1.25 x 35mm LONG CAP HEAD BOLTS (x2).
- ITEM 8 = M8 WASHERS (x2).
- ITEM 9 = M6 x 16mm LONG BUTTON HEAD BOLTS (x2).

TOOLS REQUIRED

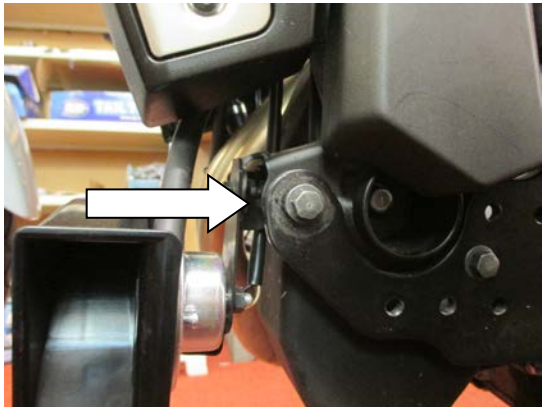
- Socket set to include 10, 14 & 17mm sockets and wrench, plus extension bars.
 - Socket set to include 4 & 8mm AF allen key sockets and wrench.
 - Torque wrench (up to 40Nm).
 - Superglue or silicon adhesive.



Picture 1



Picture 2



Picture 3



Picture 4



Picture 5



Picture 6



Picture 7



Picture 8



Picture 9

FITTING INSTRUCTIONS

- On the left side of the bike, remove the front engine bolt that sits within the hole of the plastic cover, using a 14mm socket and extension, as shown in picture 1.
- Remove the bolt and the captive nut and spacer will drop out, as shown in picture 2. The captive nut and spacer need to be re-used when fitting the engine bars.
- Remove the 10mm hex head bolt that is positioned on the footrest plate, just below the radiator cowling, as arrowed in picture 3.
- Take the left side adventure bar (item 3 – CB045) and locate one M10 x 1.25 x 120mm long head hex bolt (item 5) and M10 washer (item 4) through the slotted hole on the mounting plate of the adventure bar and one M8 x 35mm long cap head bolt (item 7) and M8 washer (item 8) through the hole in the boss as shown in the exploded drawing above.



- Re-position the OEM captive nut in the holder on the back of the engine mount (accessed by hand from besides the exhaust headers) and re-position the original spacer in line with the nut and mounting hole.
- Offer the left side adventure bar assembly up to the bike whilst locating the bolts, before loosely tightening them a handful of turns to hold the adventure bar in place, as shown in picture 4.
- Take the connecting block (item 2 – M0455) and position it inside the open ended tube that is now below the headstock, before fitting one M6 x 16mm long button head bolt (item 9) through the hole on the underside of the adventure bar and into the threaded hole on the connecting block. Engage the thread a handful of turns.
- On the right side of the bike, remove the front engine bolt that sits within the plastic hole of the plastic cover, using a 14mm socket and extension, as shown in picture 5.
- Remove the bolt and the captive nut and spacer will drop out, as shown in picture 6. The captive nut and spacer need to be re-used when fitting the engine bars.
- Remove the 10mm hex head bolt that is positioned on the footrest plate, just below the radiator cowling, as arrowed in picture 7.
- Take the right side adventure bar (item 1 – CB046) and locate the remaining M10 x 1.25 x 120mm long head hex bolt (item 5) and M10 washer (item 4) through the slotted hole on the mounting plate of the adventure bar and the remaining M8 x 35mm long cap head bolt (item 7) and M8 washer (item 8) through the hole in the boss as shown in the exploded drawing above.
- Re-position the OEM captive nut in the holder on the back of the engine mount (accessed by hand from underneath the radiator) and re-position the original spacer in line with the nut and mounting hole.
- Offer the right side adventure bar assembly up to the bike whilst locating the bolts, ensuring the open ended tube at the front locates over the connecting block previously fitted to the left side adventure bar. Loosely tighten the bolts a handful of turns to hold the adventure bar in place, as shown in picture 8.
- Fit the remaining M6 x 16mm long button head bolt through the hole on the underside of the right side adventure bar and loosely tighten into the threaded hole of the connecting block, as shown in picture 9.
- Once all the bolts are located, check that the adventure bar is fitted correctly before tightening all the bolts evenly.
- The bolts can now be fully tightened to the recommended torque settings provided above.
- Fit the rubber caps supplied in the kit onto the hex headed bolts. *It is advised to apply a small amount of superglue or silicon adhesive before fitting these to ensure they don't come off.*

ISSUE 1 12/10/2015 (AR)

CONSUMER NOTICE

The catalogue description and any exhibition of samples are only broad indications of the Products and R&G may make design changes which do not diminish their performance or visual appeal and supplying them in such state shall conform to the order. The Buyer acknowledges no representation or warranty (other than as to title) has been given or will apply to the Products other than those in R&G's order or confirmation and the Buyer confirms it has chosen the Products as being of merchantable quality and suitable for its particular purposes. Where R&G fits the Products or undertakes other services it shall exercise reasonable skill and care and rectify any fault free of charge unless the workmanship has been disturbed. The Buyer is responsible for ensuring that the warranty on the motorcycle is not affected by the fitting of the Products. On return of any defective Products R&G shall at its option either supply a replacement or refund the purchase money but shall not be liable if the Products have been modified or used or maintained otherwise than in accordance with R&G's or manufacturer's instructions and good engineering practice or if the defect arises from accident or



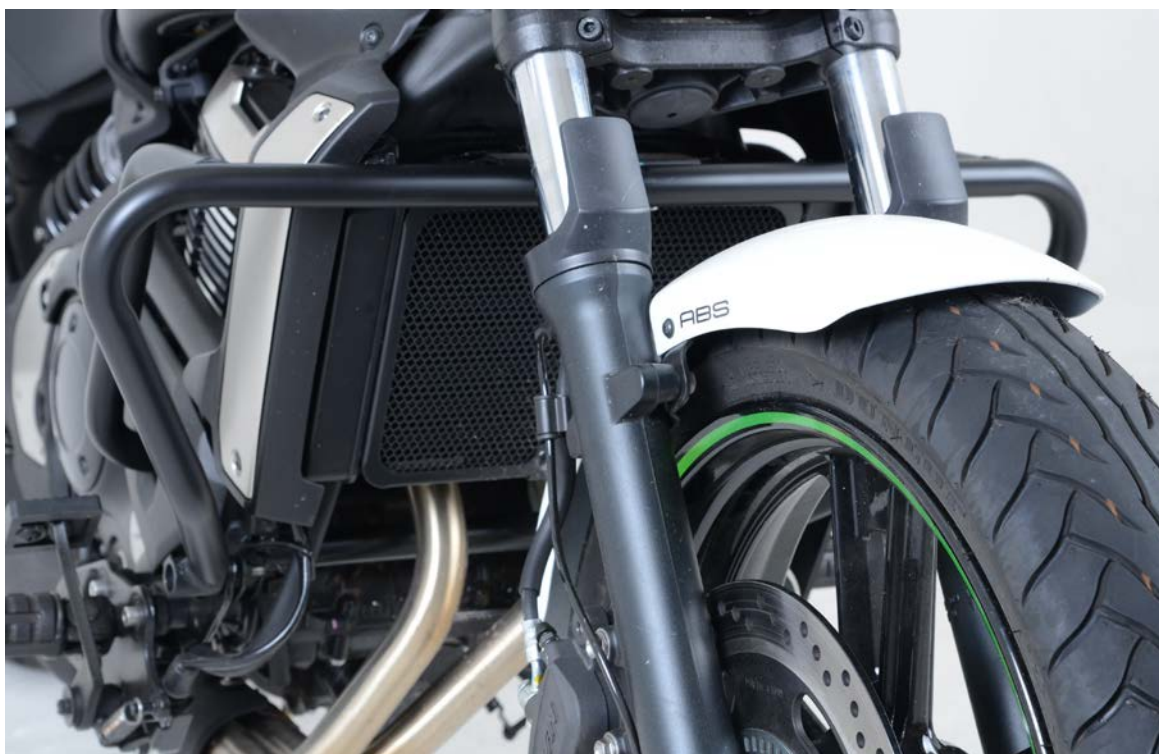
neglect. Other than identified above and subject to R&G not limiting its liability for causing death and personal injury, it shall not be liable for indirect or consequential loss and otherwise its liability shall be limited to the amounts paid by the Buyer for the Products or the fitting or service concerned. These terms do not affect the Buyer's statutory rights.

R&G RACING RETURNS POLICY (NON-FAULTY GOODS)

Returns must be pre-authorized (if not pre-authorized the return will be rejected). Goods may only be returned direct to us if they were purchased direct from us (customer must prove if necessary). Otherwise to be returned to original vendor. Goods must be in resellable condition, in the opinion of R&G Racing. All returns are subject to a 25% restocking and handling fee (25% of the gross value exc. P&P – at the prevailing price at time of purchase). The customer must pay any and all carriage charges. No returns of discontinued products, unless within 14 days of purchase. This policy does not affect your statutory rights and does not refer to faulty goods.



**INSTRUCTIONS DE MONTAGE POUR AB0017BK BARRES AVENTURE
KAWASAKI VULCAN S '15-**



LE KIT CONTIENT LES ARTICLES EXPOSES CI-DESSOUS, VERIFIER QUE TOUTES LES PIECES SOIENT PRESENTES AVANT DE PROCEDER AU MONTAGE.

**LA FAÇON DONT LE KIT EST EMBALLÉ NE CORRESPOND PAS FORCÉMENT À LA FAÇON DE
MONTER LES PIÈCES SUR LA MOTO.**

LES PARTIES PRESENTEES PEUVENT ETRE UNIQUEMENT REPRESENTATIVES (POUR LA CLARTE DES INSTRUCTIONS UNIQUEMENT).

Ces instructions de montage sont disponibles sur www.rg-racing.com

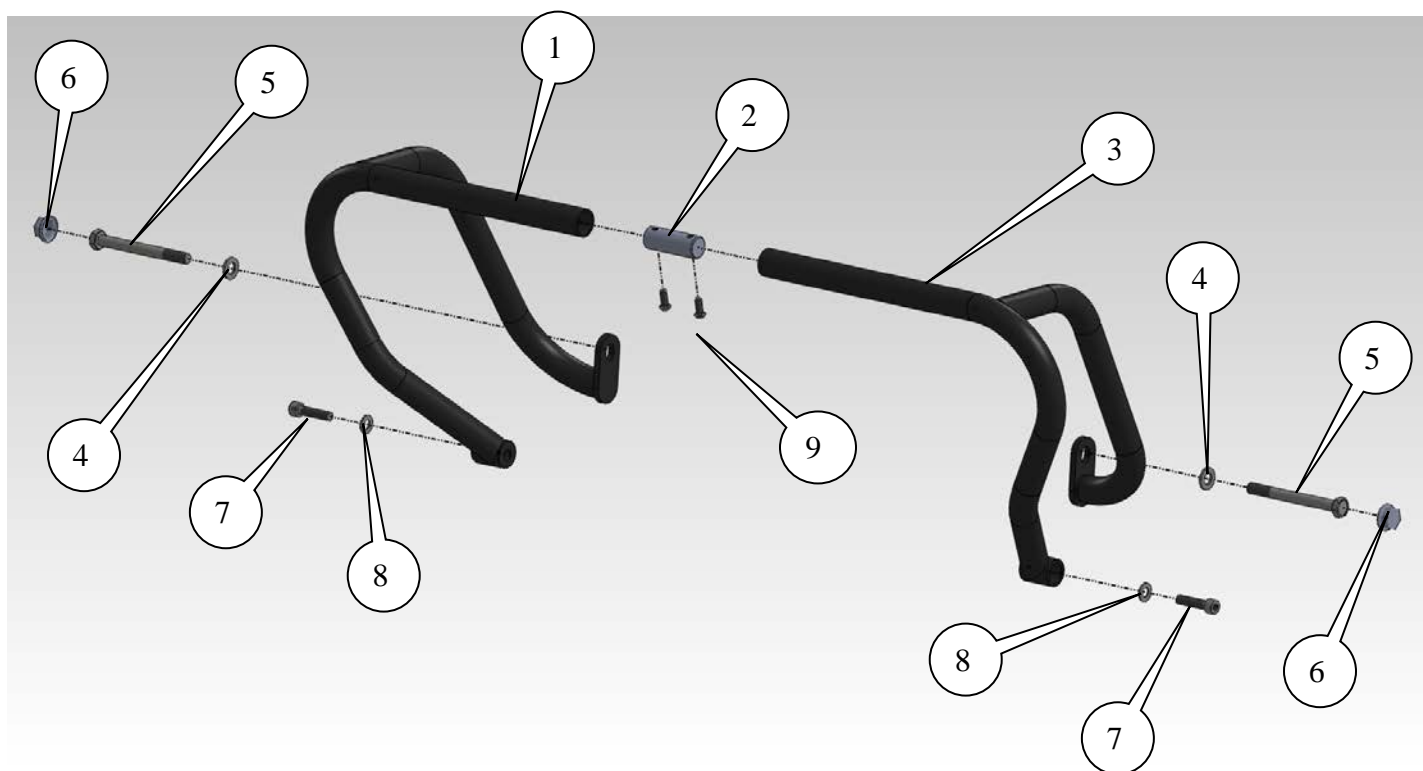
COUPLES DE SERRAGE GENERAUX

M4 BOULON = 8Nm
M5 BOULON = 12Nm
M6 BOULON = 15Nm
M8 BOULON = 20Nm
M10 BOULON = 40Nm



M12 BOULON = 40Nm

M12 ECROU = 40Nm



LEGENDE

- ARTICLE 1 = BARRE AVENTURE COTE DROIT (CB046) (x1).
- ARTICLE 2 = BLOC TUBULAIRE CONNECTEUR (M0455) (x1).
- ARTICLE 3 = BARRE AVENTURE COTE GAUCHE (CB045) (x1).
- ARTICLE 4 = M10 RONDELLES (x2).
- ARTICLE 5 = M10 x 1.25 x 120mm BOULONS (x2).
- ARTICLE 6 = M10 CAPUCHONS (x2).
- ARTICLE 7 = M8 x 1.25 x 35mm BOULONS (x2).
- ARTICLE 8 = M8 RONDELLES (x2).
- ARTICLE 9 = M6 x 16mm BOULONS (x2).

OUTILS REQUIS

- Clés à douille 10, 14 & 17mm, plus extensions.
 - Clés Allen 4 & 8mm.



- Clé dynamométrique (à 40Nm).
- Un peu de superglue.



Photo 1



Photo 2

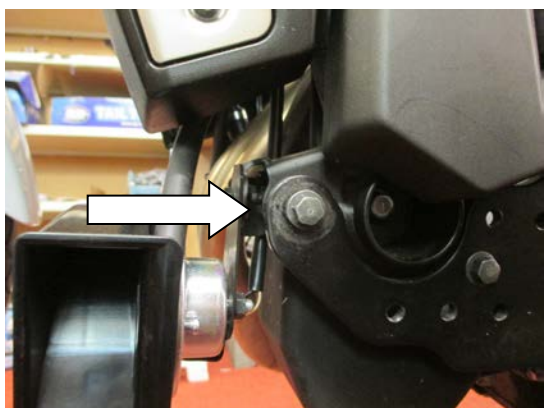


Photo 3



Photo 4





Photo 5

Photo 6



Photo 7



Photo 8



Photo 9

INSTRUCTIONS DE MONTAGE

- Du côté gauche de la moto, enlevez le boulon moteur avant situé dans le trou du cache plastique, en utilisant une clé 14mm et une extension, voir photo 1.
- Enlever le boulon et l'écrou et l'entretoise tombera, voir photo 2. L'écrou et l'entretoise seront réutilisés lors de l'installation des barres moteur.
- Enlever le boulon 10mm positionné sur la plaque repose pied, juste en dessous du capot de radiateur, voir photo 3.
- Prendre la barre aventure du côté gauche (article 3 – CB045) et placez un boulon M10 x 1.25 x 120mm (article 5) et une rondelle M10 (article 4) dans le trou de la plaque de fixation de la barre aventure et un boulon M8 x 35mm (article 7) muni d'une rondelle M8 (article 8) dans le trou du patron comme représenté sur la vue éclatée ci-dessus.



- Repositionner l'écrou d'origine dans le support au bas du support moteur (accessible avec la main en dehors des en-têtes d'échappement) puis repositionner l'entretoise d'origine en ligne avec l'écrou et le trou de fixation.
- Monter l'assemblage de barre aventure gauche sur la moto tout en plaçant les boulons, avant de les serrer légèrement à la main afin que la barre reste en position, voir photo 4.
- Prendre le bloc connecteur (article 2 – M0455) et positionnez-le dans le tube à extrémité ouverte, avant d'insérer un boulon M6 x 16mm (article 9) dans le trou au dessous de la barre aventure et dans le trou fileté du bloc connecteur. Engagez le filetage à la main.
- Du coté droit de la moto, enlevez le boulon moteur avant situé dans le trou du cache plastique, en utilisant une clé 14mm et une extension, voir photo 5.
- Enlever le boulon et l'écrou et l'entretoise tombera, voir photo 6. L'écrou et l'entretoise seront réutilisés lors de l'installation des barres moteur.
- Enlever le boulon 10mm positionné sur la plaque repose pied, juste en dessous du capot de radiateur, voir photo 7.
- Prendre la barre aventure du coté gauche (article 1 – CB046) et placez un boulon M10 x 1.25 x 120mm (article 5) et une rondelle M10 (article 4) dans le trou de la plaque de fixation de la barre aventure et un boulon M8 x 35mm (article 7) muni d'une rondelle M8 (article 8) dans le trou du patron comme représenté sur la vue éclatée ci-dessus.
- Repositionner l'écrou d'origine dans le support au bas du support moteur (accessible avec la main en dehors des en-têtes d'échappement) puis repositionner l'entretoise d'origine en ligne avec l'écrou et le trou de fixation.
- Monter l'assemblage de barre aventure droit sur la moto tout en plaçant les boulons, en veillant à ce que le tube à extrémité ouverte à l'avant se place autour du bloc connecteur précédemment installé sur la barre aventure du coté gauche. Serrer légèrement à la main afin que la barre reste en position, voir photo 8.
- Insérer le boulon M6 x 16mm restant dans le trou au dessous de la barre aventure coté droit puis serrer légèrement dans le trou fileté du bloc connecteur, voir photo 9.
- Une fois tous les boulons placés, vérifiez que la barre aventure soit correctement fixée avant de serrer tous les boulons de façon identique.
- Les boulons peuvent à présent être serrés aux couples de serrage recommandés précisés plus haut.
- Placer les capuchons en caoutchouc fournis dans le kit sur les boulons. *Il est conseillé d'appliquer un peu de superglue ou adhésif silicone avant de les placer pour vous assurer qu'ils ne tomberont pas.*

ISSUE 1 12/10/2015 (AR)

CONSUMER NOTICE

The catalogue description and any exhibition of samples are only broad indications of the Products and R&G may make design changes which do not diminish their performance or visual appeal and supplying them in such state shall conform to the order. The Buyer acknowledges no representation or warranty (other than as to title) has been given or will apply to the Products other than those in R&G's order or confirmation and the Buyer confirms it has chosen the Products as being of merchantable quality and suitable for its particular purposes. Where R&G fits the Products or undertakes other services it shall exercise reasonable skill and care and rectify any fault free of charge unless the workmanship has been disturbed. The Buyer is responsible for ensuring that the warranty on the motorcycle is not affected by the fitting of the Products. On return of any defective Products R&G shall at its option either supply a replacement or refund the purchase money but shall not be liable if the Products have been modified or used or maintained otherwise than in accordance with R&G's or manufacturer's instructions and good engineering practice or if the defect arises from accident or neglect. Other than identified above and subject to R&G not limiting its liability for causing death and personal injury, it shall not be liable for indirect or consequential loss and otherwise its liability shall be limited to the amounts paid by the Buyer for the Products or the fitting or service concerned. These terms do not affect the Buyer's statutory rights.

R&G Racing

Unit 1, Shelley's Lane, East Worldham, Alton, Hampshire, GU34 3AQ

Tel: +44 (0)1420 89007 Fax: +44 (0)1420 87301 www.rg-racing.com Email: info@rg-racing.com



R&G RACING RETURNS POLICY (NON-FAULTY GOODS)

Returns must be pre-authorized (if not pre-authorized the return will be rejected). Goods may only be returned direct to us if they were purchased direct from us (customer must prove if necessary). Otherwise to be returned to original vendor. Goods must be in re-sellable condition, in the opinion of R&G Racing. All returns are subject to a 25% restocking and handling fee (25% of the gross value exc. P&P – at the prevailing price at time of purchase). The customer must pay any and all carriage charges. No returns of discontinued products, unless within 14 days of purchase. This policy does not affect your statutory rights and does not refer to faulty goods.

R&G Racing

Unit 1, Shelley's Lane, East Worldham, Alton, Hampshire, GU34 3AQ

Tel: +44 (0)1420 89007 Fax: +44 (0)1420 87301 www.rg-racing.com Email: info@rg-racing.com



**MONTAGEANLEITUNG FÜR AB0017BK ADVENTURE STURZBÜGEL
KAWASAKI VULCAN S '15-**



**ALLE TEILE SIND UNTEN ABGEBILDET UND GEKENNZEICHNET. BEVOR SIE MIT DER
MONTAGE BEGINNEN, ÜBERPRÜFEN SIE, DASS ALLE TEILE VORHANDEN SIND.**

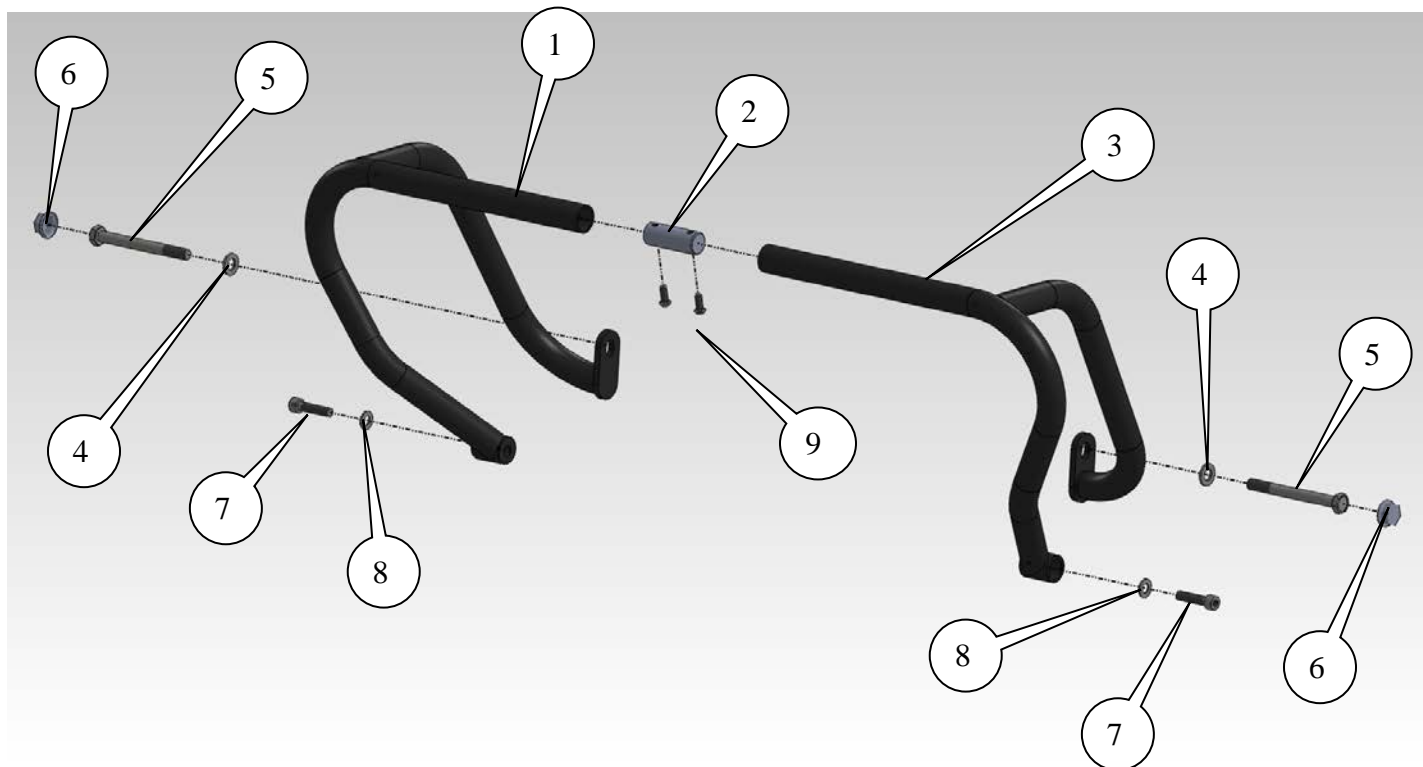
Hinweis: Die Verpackung der Teile stellt nicht die Reihenfolge der Montage dar.

DIE UNTEN ABGEBILDETEN TEILE DIENEN LEDIGLICH ZUR ERKLÄRUNG.

**Eine digitale Version dieser Montageanleitung kann auf folgender Seite heruntergeladen
werden: www.rg-racing.com**

MAXIMALE ANZUGSDREHMOMENTE:

- M4 Schraube = 8 Nm
- M5 Schraube = 12 Nm
- M6 Schraube = 15 Nm
- M8 Schraube = 20 Nm
- M10 Schraube = 40 Nm
- M12 Schraube = 40 Nm
- M12 selbstsichernde Mutter = 40 Nm



LIEFERUMFANG

- ARTIKEL 1 = ADVENTURE STURZBÜGEL RECHTE SEITE (CB046) (x1)
- ARTIKEL 2 = ROHRVERBINDER (M0455) (x1)
- ARTIKEL 3 = ADVENTURE STURZBÜGEL LINKE SEITE (CB045) (x1)
- ARTIKEL 4 = M10 UNTERLEGSSCHEIBEN (x2)
- ARTIKEL 5 = M10 x 1,25 x 120mm SECHSKANTSCHRAUBEN (x2)
- ARTIKEL 6 = M10 GUMMIABDECKUNGEN FÜR DIE SECHSKANTSCHRAUBEN (x2)
- ARTIKEL 7 = M8 x 1,25 x 35mm INBUSSCHRAUBEN (x2)
- ARTIKEL 8 = M8 UNTERLEGSSCHEIBEN (x2)
- ARTIKEL 9 = M6 x 16mm INBUSSCHRAUBEN (x2)

SIE BENÖTIGEN FOLGENDES WERKZEUG

- Steckschlüsselsatz inkl. 10, 14, und 17 mm Steckschlüssel und Verlängerungen
 - 4 & 8 mm Inbusschlüssel-Satz
 - Drehmomentschlüssel (bis 40Nm)
 - Sekundenkleber oder Silikonkleber



Abbildung 1



Abbildung 2



Abbildung 3



Abbildung 4



Abbildung 5



Abbildung 6



Abbildung 7



Abbildung 8



Abbildung 9

MONTAGEANLEITUNG

- An der linken Seite des Motorrades die vordere Motorschraube entfernen, die in der Öffnung der Plastikverkleidung platziert ist (benutzen Sie einen 14mm Steckschlüssel und Verlängerung)- siehe Abbildung 1.
- Wenn Sie die Schraube entfernen, werden die Mutter und der Abstandshalter herausfallen, wie in Abbildung 2 abgebildet. Die Mutter und der Abstandshalter werden später bei der Montage der Sturzbügel benötigt.
- Entfernen Sie die 10mm Sechskantschraube, die an der Platte für die Fußraste platziert ist (unter der Kühlerverkleidung) – siehe Abbildung 3.
- Nehmen Sie den Adventure Sturzbügel für die linke Seite (Artikel 3 – CB045). Führen Sie eine M10 x 1,25 x 120mm Sechskantschraube (Artikel 5) und M10 Unterlegscheibe (Artikel 4) durch das Langloch an der Montageplatte des Sturzbügels und eine M8 x 35mm Inbusschraube (Artikel 7) sowie eine M8 Unterlegscheibe (Artikel 8) durch die Öffnung in der Lochplatte, wie in der Explosionszeichnung oben abgebildet.



- Die Original Mutter in der Halterung auf der Rückseite der Motoraufhängung neu positionieren (Zugang mit der Hand von neben dem Auspuffkrümmer) und den Original-Distanzhalter mit der Mutter und der Montageöffnung linear positionieren.
- Die Adventure Sturzbügel-Einheit für die linke Seite ans Motorrad ansetzen und die Schrauben mit einigen Drehungen handfest anziehen, um den Stürzbügel in Position zu halten – siehe Abbildung 4.
- Nehmen Sie den Rohrverbinder (Artikel 2 – M0455) und positionieren Sie den im Inneren der offenen Röhre, jetzt unter dem Steuerkopf, bevor Sie eine M6 x 16mm Inbusschraube (Artikel 9) durch die Öffnung an der Unterseite des Sturzbügels und in die Gewindebohrung am Rohrverbinder einführen und lose befestigen.
- An der rechten Seite des Motorrads die vordere Motorschraube entfernen (benutzen Sie einen 14mm Steckschlüssel mit Verlängerung), die in der Öffnung der Plastikverkleidung platziert ist, wie in Abbildung 5 abgebildet.
- Wenn Sie die Schraube entfernen, werden die Mutter und der Abstandshalter herausfallen, wie in Abbildung 6 abgebildet. Die Mutter und der Abstandshalter werden später bei der Montage der Sturzbügel benötigt.
- Entfernen Sie die 10mm Sechskantschraube, die an der Platte für die Fußraste platziert ist (unter der Kühlerverkleidung) – siehe Abbildung 7.
- Nehmen Sie den Adventure Sturzbügel für die rechte Seite (Artikel 1 – CB046). Führen Sie eine M10 x 1,25 x 120mm Sechskantschraube (Artikel 5) und M10 Unterlegscheibe (Artikel 4) durch das Langloch an der Montageplatte des Sturzbügels und die übrige M8 x 35mm Inbusschraube (Artikel 7) sowie die M8 Unterlegscheibe (Artikel 8) durch die Öffnung in der Lochplatte, wie in der Explosionszeichnung oben abgebildet
- Die Original Mutter in der Halterung auf der Rückseite der Motoraufhängung neu positionieren (Zugang mit der Hand von unter dem Kühler) und den Original-Distanzhalter mit der Mutter und der Montageöffnung linear positionieren.
- Die Adventure Sturzbügel-Einheit für die rechte Seite nun ans Motorrad ansetzen und die Schrauben positionieren – achten Sie bitte darauf, dass die offene Röhre vorne über den bereits an der linken Seite montierten Rohrverbinder angebracht wird. Die Schrauben nun mit einigen Drehungen lose fixieren, um den Stürzbügel in Position zu halten – siehe Abbildung 8.
- Führen Sie die übrige M6 x 16mm Inbusschraube durch die Öffnung an der Unterseite des Adventure Sturzbügels in die Gewindeöffnung des Rohrverbinders und ziehen Sie sie handfest an, wie in Abbildung 9 abgebildet.
- Sobald alle Schrauben fixiert sind, überprüfen Sie, dass der Adventure Sturzbügel richtig montiert ist, dann ziehen Sie alle Schrauben gleichmäßig fest.
- Alle Schrauben gemäß den oben empfohlenen Anzugsdrehmomenten festziehen.
- Montieren Sie die Gummiabdeckungen vom Kit an den Sechskantschrauben. *Es wird empfohlen, diese vorher mit etwas Sekundenkleber oder Silikonkleber zu versehen, um zu verhindern, dass sie sich lösen.*

AUSGABE 1 12/10/2015 (AR)

CONSUMER NOTICE

The catalogue description and any exhibition of samples are only broad indications of the Products and R&G may make design changes which do not diminish their performance or visual appeal and supplying them in such state shall conform to the order. The Buyer acknowledges no representation or warranty (other than as to title) has been given or will apply to the Products other than those in R&G's order or confirmation and the Buyer confirms it has chosen the Products as being of merchantable quality and suitable for its particular purposes. Where R&G fits the Products or undertakes other services it shall exercise reasonable skill and care and rectify any fault free of charge unless the



workmanship has been disturbed. The Buyer is responsible for ensuring that the warranty on the motorcycle is not affected by the fitting of the Products. On return of any defective Products R&G shall at its option either supply a replacement or refund the purchase money but shall not be liable if the Products have been modified or used or maintained otherwise than in accordance with R&G's or manufacturer's instructions and good engineering practice or if the defect arises from accident or neglect. Other than identified above and subject to R&G not limiting its liability for causing death and personal injury, it shall not be liable for indirect or consequential loss and otherwise its liability shall be limited to the amounts paid by the Buyer for the Products or the fitting or service concerned. These terms do not affect the Buyer's statutory rights.

R&G RACING RETURNS POLICY (NON-FAULTY GOODS)

Returns must be pre-authorized (if not pre-authorized the return will be rejected). Goods may only be returned direct to us if they were purchased direct from us (customer must prove if necessary). Otherwise to be returned to original vendor. Goods must be in re-sellable condition, in the opinion of R&G Racing. All returns are subject to a 25% restocking and handling fee (25% of the gross value exc. P&P – at the prevailing price at time of purchase). The customer must pay any and all carriage charges. No returns of discontinued products, unless within 14 days of purchase. This policy does not affect your statutory rights and does not refer to faulty goods.