



**FITTING INSTRUCTIONS FOR CP0327BL**  
**AERO CRASH PROTECTORS**  
**MV AGUSTA 675 BRUTALE 2012**



Picture A

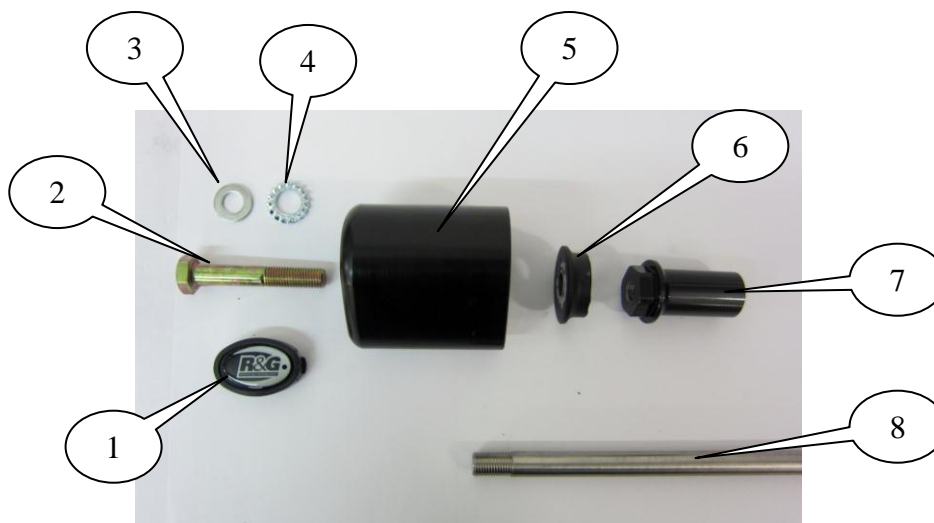


Picture B

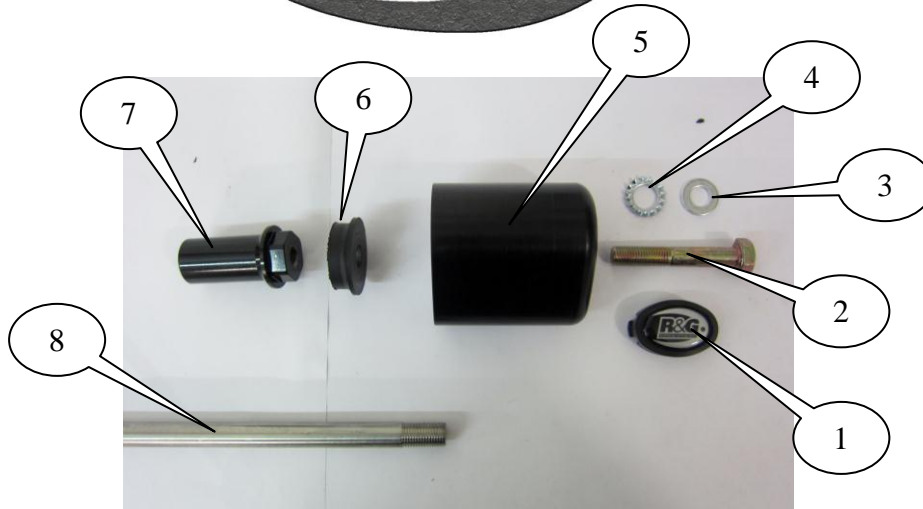
**THIS KIT CONTAINS THE ITEMS PICTURED AND LABELLED BELOW.**  
**DO NOT PROCEED UNTIL YOU ARE SURE ALL PARTS ARE PRESENT.**

**Please note that the way the kit is packed does not necessarily represent the way of mounting to the bike**

THE PARTS SHOWN MAY BE REPRESENTATIVE ONLY (FOR CLARITY OF INSTRUCTIONS ONLY)



LEFT SIDE



RIGHT SIDE

**LEGEND**

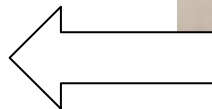
- ITEM 1= CRASH PROTECTOR CAPS (BC0002) (x2).
- ITEM 2= M10x1.25x70mm LONG HEX HEADED BOLTS (x2).
- ITEM 3= M10 PLAIN WASHERS (x2).
- ITEM 4= LOCK-WASHERS (LW0001) (x2).
- ITEM 5= CRASH PROTECTOR (B0061 with CS341) (x2).
- ITEM 6= SPACER (S0578) (10.70mm LONG) (x2).
- ITEM 7= EXTENSION (E0051) (x2).
- ITEM 8= ENGINE BAR (EB068) (350mm LONG) (x1).

Please note that in cases where kits are packed with rubber washers holding the components onto the bolt – *the rubber washers should be thrown away!*

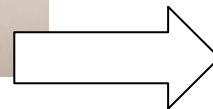
**TOOLS REQUIRED**

- Socket set to include 2x 14, 17 & 22mm socket and wrench.
  - Mallet / soft hammer.
  - Torque wrench (up to 40Nm).

TOWARDS REAR  
OF BIKE



TOWARDS FRONT  
OF BIKE



PICTURE C



## FITTING INSTRUCTIONS

### *Off side (right side as you sit on bike)*

- Undo the nut on the engine bolt located mid-engine as arrowed in picture 'A'.
- Take R&G engine bar (item 8 – EB068 – 350mm long) and, with a soft hammer, use it to knock through the OEM bolt leaving equal amounts protruding on each side of the frame.
- Fit the extensions (item 7 – E0051) on each exposed end of the engine bar (the smaller diameter goes inside the frame) and tighten ensuring equal amounts of threads are engaged on both sides.
- Slide one of the 10mm washers (item 3) onto the M10x70mm long hexagon headed bolt (item 2) so washer sits against head of bolt.
- Slide serrated locking washer (item 4) over the bolt so it sits against washer just fitted.
- Next slide the bolt with washers through either crash protector (item 5) so head of bolt and washers goes into counter-bore in bobbin.
- Place either of the spacers (item 6) over the exposed end of bolt so the larger diameter sits against the crash protector.
- Offer the crash protector and spacer assembly into the threaded hole in the extension (as shown in picture 'A') and tighten bolt until you feel some compression from inside the protector using 17mm socket and wrench. **PLEASE NOTE THE CRASH PROTECTOR MUST BE POSITIONED AS IN PICTURE 'C' WITH BIGGER END TOWARD FRONT OF BIKE.** Turn a little more so that you feel the compression increase slightly. Then apply a quarter turn. Do not over tighten as damage can occur to the bike. Do not exceed 40nm of torque.

### *Near side (left side as you sit on bike)*

- Slide the remaining 10mm washer (item 3) onto the remaining M10x70mm long hexagon headed bolt (item 2) so washer sits against head of bolt.
- Slide serrated locking washer (item 4) over the bolt so it sits against washer just fitted.
- Next slide the bolt with washers through the remaining crash protector (item 5) so head of bolt and washers goes into counter-bore in bobbin.
- Place the remaining spacer (item 6) over the exposed end of bolt so the larger diameter sits against the crash protector.
- Offer the crash protector and spacer assembly into the threaded hole in the extension (as shown in picture 'B') and tighten bolt until you feel some compression from inside the protector using 17mm socket and wrench. **PLEASE NOTE THE CRASH PROTECTOR MUST BE POSITIONED AS IN PICTURE 'C' WITH BIGGER END TOWARD FRONT OF BIKE.** Turn a little more so that you feel the compression increase slightly. Then apply a quarter turn. Do not over tighten as damage can occur to the bike. Do not exceed 40nm of torque.
- If not already fitted fit bubble stickers into recess of both crash protector caps.
- Fit crash protector caps into both crash protectors.

ISSUE 1 21/11/2012 (AR)



**Instructions de montage**  
CP0327 Protections Crash  
MV AGUSTA 675 BRUTALE 2012



Photo A

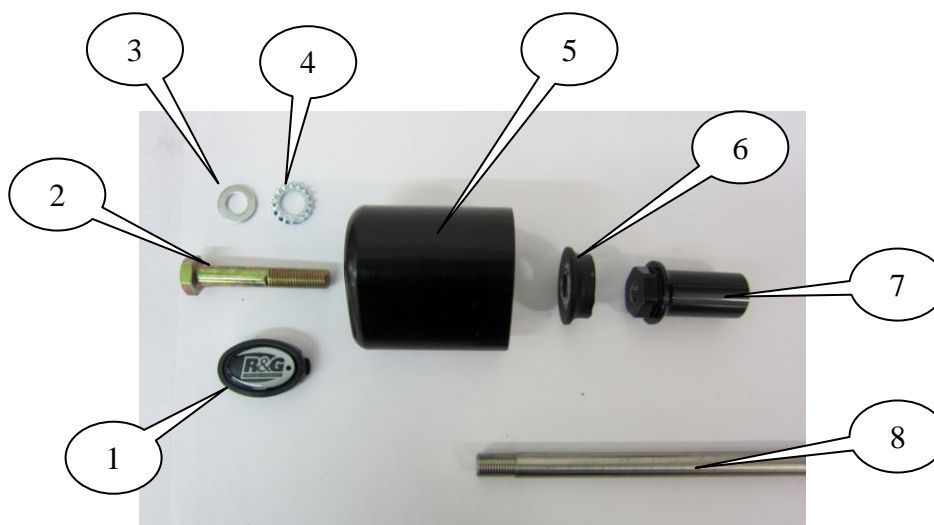


Photo B

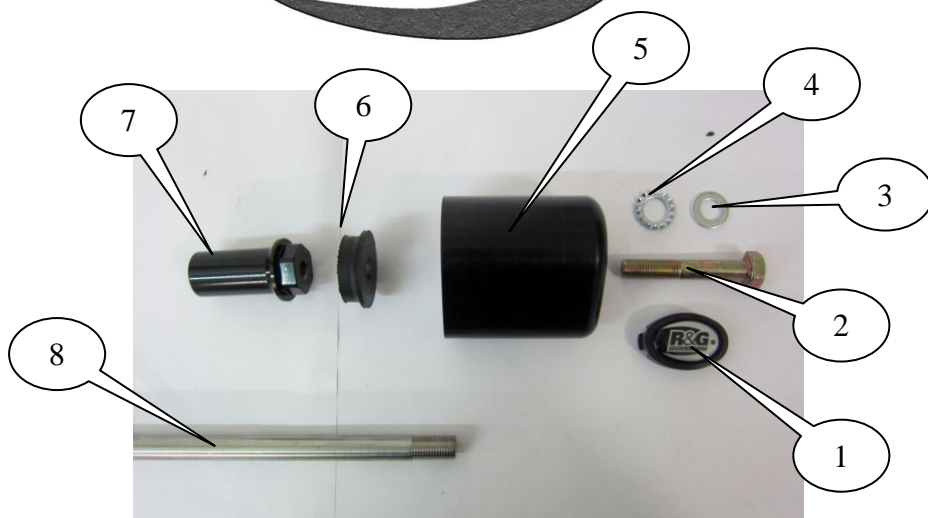
**LE KIT CONTIENT LES ARTICLES EXPOSES CI-DESSOUS, VERIFIER QUE TOUTES LES PIECES SOIENT PRESENTES AVANT DE PROCEDER AU MONTAGE.**

**LA FAÇON DONT LE KIT EST EMBALLE NE CORRESPOND PAS FORCEMENT A LA FAÇON DE MONTER LES PIECES SUR LA MOTO.**

Les pièces présentées peuvent n'être que représentatives, afin de faciliter et clarifier les instructions de montage



LEFT SIDE



RIGHT SIDE

**LEGEND**

- ARTICLE 1= Capuchons protection crash (BC0002) (x2).
- ARTICLE 2= M10x1.25x70mm Longs boulons de protection crash à tête hexagonale (x2).
- ARTICLE 3= M10 Rondelles plates (x2).
- ARTICLE 4= Rondelles de blocage (LW0001) (x2).
- ARTICLE 5= Protection crash (B0061 avec CS341) (x2).
- ARTICLE 6= Entretoise (S0578) (10.70mm de long) (x2).
- ARTICLE 7= Extension (E0051) (x2).
- ARTICLE 8= Barre moteur (EB068) (350mm de long) (x1).

Notez que si les kits sont emballés avec des rondelles en caoutchouc servant à tenir les composants, *ces rondelles doivent être jetées.*

**Outils requis**

- Jeu de clés 2x 14, 17 & 22mm
  - Maillet
- Clé dynamométrique (up to 40Nm).

Arrière moto



Avant moto

PHOTO C



## INSTRUCTIONS DE MONTAGE

### Coté droit de la moto

- Enlever l'écrou du boulon moteur situé à mi moteur (Photo 'A').
- Prendre la barre de protection R&G (Article 8 – EB068 – 350mm de long) et, taper avec un maillet à travers le boulon d'origine en laissant dépasser la même longueur de chaque coté du cadre.
- Installer les extensions (Article 7 – E0051) sur chaque extrémité de la barre moteur ( le plus petit diamètre va dans le cadre) et serrer en vous assurant que la même longueur soit inséré de chaque coté.
- Glisser une des rondelles M10 (Article 3) sur le long boulon à tête hexagonale M10x70mm (Article 2) de sorte à ce que la rondelle aille contre la tête du boulon.
- Glisser une rondelle dentelée (Article 4) autour du boulon de sorte à ce qu'elle se place contre la rondelle tout juste installée.
- Glisser ensuite le boulon avec rondelles à travers l'une des protections (Article 5) pour que la tête du boulon et les rondelles aillent dans le contre alésage de la bobine.
- Placer l'une des entretoises (Article 6) autour de l'extrémité du boulon de sorte à ce que le plus gros diamètre aille contre la protection crash.
- Placer l'ensemble avec la rondelle dans le trou présent sur l'extension (Photo 'A').
- Serrer l'ensemble jusqu'à ce que vous sentiez une légère compression de l'intérieur de la protection avec une clé de 17mm. **LA PROTECTION DOIT ETRE POSITIONNEE COMME EN "C" AVEC LE COTE ARRONDI LE PLUS GROS EN DIRECTION DE L'AVANT DE LA MOTO.** Tourner un peu plus afin d'accentuer légèrement la compression. Ne pas trop serer, au risqué d'abîmer la moto. Pas plus de 40 Nm de couple
- Placer le logo en caoutchouc dans le creux de la protection.

### Coté gauche de la moto

- Glisser la rondelle de 10mm restante (Article 3) sur le boulon à tête hexagonale restant M10x70mm (Article 2) de façon à ce que la rondelle aille contre la tête du boulon.
- Glisser une rondelle dentelée (Article 4) autour du boulon de sorte à ce qu'elle se place contre la rondelle tout juste installée.
- Glisser ensuite le boulon avec rondelles à travers la protection restante (Article 5) pour que la tête du boulon et les rondelles aillent dans le contre alésage de la bobine.
- Placer l'entretoise restante (Article 6) autour de l'extrémité du boulon de sorte à ce que le plus gros diamètre aille contre la protection crash.
- Placer la protection crash et la rondelle dans le trou présent sur l'extension (Photo 'B')
- Serrer l'ensemble jusqu'à ce que vous sentiez une légère compression de l'intérieur de la protection avec une clé de 17mm. **LA PROTECTION DOIT ETRE POSITIONNEE COMME EN "C" AVEC LE COTE ARRONDI LE PLUS GROS EN DIRECTION DE L'AVANT DE LA MOTO.** Tourner un peu plus afin d'accentuer légèrement la compression. Ne pas trop serer, au risqué d'abîmer la moto. Pas plus de 40 Nm de couple
- Placer le logo en caoutchouc dans le creux de la protection.

ISSUE 1 21/11/2012 (AR)



#### **CONSUMER NOTICE**

The catalogue description and any exhibition of samples are only broad indications of the Products and R&G may make design changes which do not diminish their performance or visual appeal and supplying them in such state shall conform to the order. The Buyer acknowledges no representation or warranty (other than as to title) has been given or will apply to the Products other than those in R&G's order or confirmation and the Buyer confirms it has chosen the Products as being of merchantable quality and suitable for its particular purposes. Where R&G fits the Products or undertakes other services it shall exercise reasonable skill and care and rectify any fault free of charge unless the workmanship has been disturbed. The Buyer is responsible for ensuring that the warranty on the motorcycle is not affected by the fitting of the Products. On return of any defective Products R&G shall at its option either supply a replacement or refund the purchase money but shall not be liable if the Products have been modified or used or maintained otherwise than in accordance with R&G's or manufacturer's instructions and good engineering practice or if the defect arises from accident or neglect. Other than identified above and subject to R&G not limiting its liability for causing death and personal injury, it shall not be liable for indirect or consequential loss and otherwise its liability shall be limited to the amounts paid by the Buyer for the Products or the fitting or service concerned. These terms do not affect the Buyer's statutory rights.

#### **R&G RACING RETURNS POLICY (NON-FAULTY GOODS)**

Returns must be pre-authorized (if not pre-authorized the return will be rejected). Goods may only be returned direct to us if they were purchased direct from us (customer must prove if necessary). Otherwise to be returned to original vendor. Goods must be in re-sellable condition, in the opinion of R&G Racing. All returns are subject to a 25% restocking and handling fee (25% of the gross value exc. P&P – at the prevailing price at time of purchase). The customer must pay any and all carriage charges. No returns of discontinued products, unless within 14 days of purchase. This policy does not affect your statutory rights and does not refer to faulty goods.

R&G Racing

Unit 1, Shelley's Lane, East Worldham, Alton, Hampshire, GU34 3AQ

Tel: +44 (0)1420 89007 Fax: +44 (0)1420 87301 [www.rg-racing.com](http://www.rg-racing.com) Email: [info@rg-racing.com](mailto:info@rg-racing.com)