



FITTING INSTRUCTIONS FOR AFC0001 ADJUSTABLE FOOT CONTROLS
KAWASAKI VULCAN 'S' 2015-

Page | 1



PICTURE 'A'



PICTURE 'B'

THIS KIT CONTAINS THE ITEMS PICTURED AND LABELLED BELOW.
DO NOT PROCEED UNTIL YOU ARE SURE ALL PARTS ARE PRESENT.

Please note that the way the kit is packed does not necessarily represent the way of mounting to the bike

Please note that in cases where kits are packed with rubber washers holding the components onto the bolt – *the rubber washers should be thrown away!*

THE PARTS SHOWN MAY BE REPRESENTATIVE ONLY (FOR CLARITY OF INSTRUCTIONS ONLY)

Digital copies of these instructions are available to download from www.rg-racing.com

GENERAL TORQUE SETTINGS

M4 BOLT = 8Nm
 M5 BOLT = 12Nm
 M6 BOLT = 15Nm
 M8 BOLT = 20Nm
 M10 BOLT = 40Nm

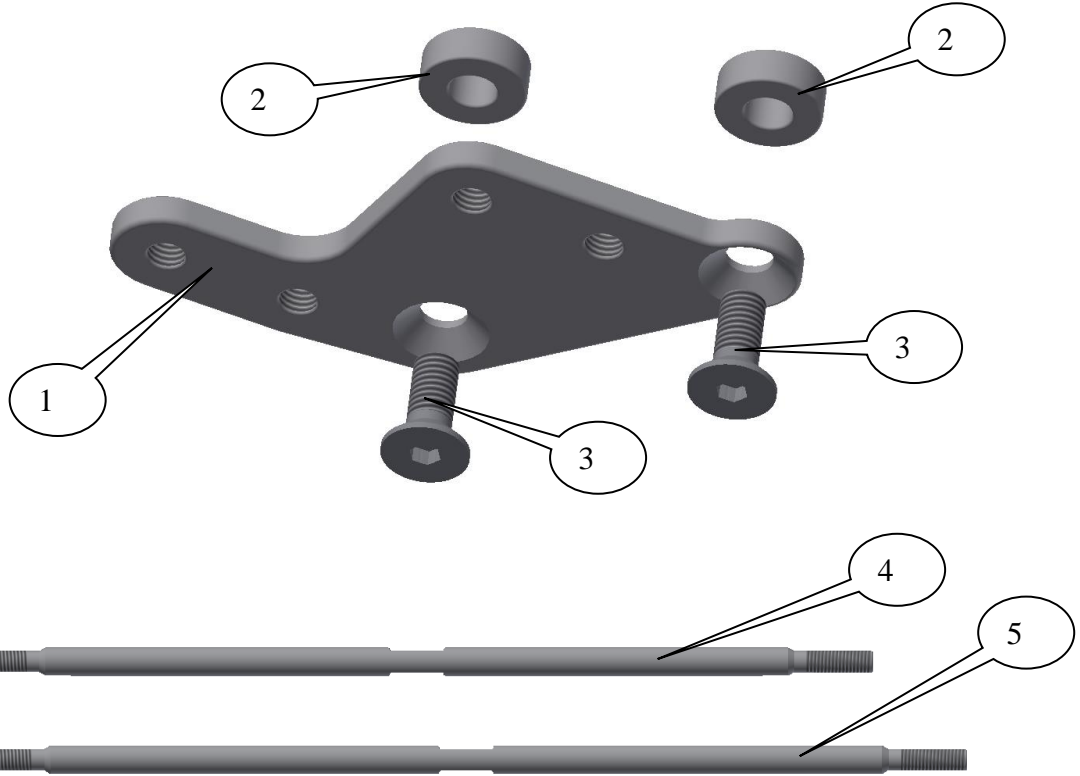
TOOLS REQUIRED

- Socket set to include 10 and 12mm A/F socket and wrench.
 - Set of metric Allen keys to include 5mm A/F.
 - 10mm Spanner.
 - Torque wrench (up to 20Nm).

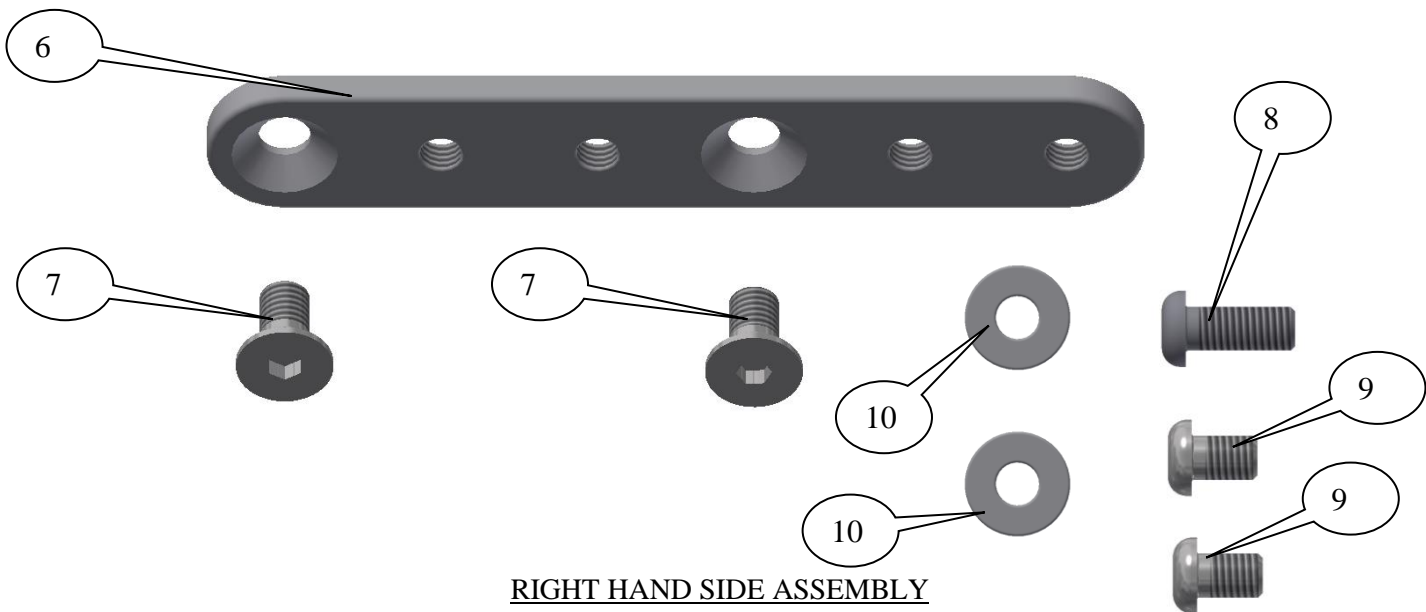
R&G Racing

Unit 1 Shelleys Lane, East Worldham, Alton, Hants GU34 3AQ

Tel: +44 (0)1420 89007 Fax: +44 (0)1420 87301 www.rg-racing.com Email: info@rg-racing.com



LEFT HAND SIDE ASSEMBLY



RIGHT HAND SIDE ASSEMBLY

R&G Racing

Unit 1 Shelleys Lane, East Worldham, Alton, Hants GU34 3AQ

Tel: +44 (0)1420 89007 Fax: +44 (0)1420 87301 www.rg-racing.com Email: info@rg-racing.com



LEGEND

- ITEM 1 = MOUNTING PLATE-LHS (PLATE 0170) (x1).
 ITEM 2 = MOUNTING PLATE SPACERS (S0919) (x2).
 ITEM 3 = M8x20mm LONG COUNTER-SUNK BOLTS (LHS) (x2).
 ITEM 4 = GEAR SHIFT ROD (255mm LONG) (SB0117) (x1).
 ITEM 5 = GEAR SHIFT ROD (280mm LONG) (SB0118) (x1).
 ITEM 6 = MOUNTING PLATE-RHS (PLATE 0171) (x1).
 ITEM 7 = M8x12mm LONG COUNTER-SUNK BOLTS (RHS) (x2).
 ITEM 8 = M8x20mm LONG BUTTON HEAD BOLT (RHS) (x1).
 ITEM 9 = M8x12mm LONG BUTTON HEAD BOLTS (RHS) (x2).
 ITEM 10 = M8 WASHERS (x2).

Page | 3



PICTURE 1



PICTURE 2



PICTURE 3

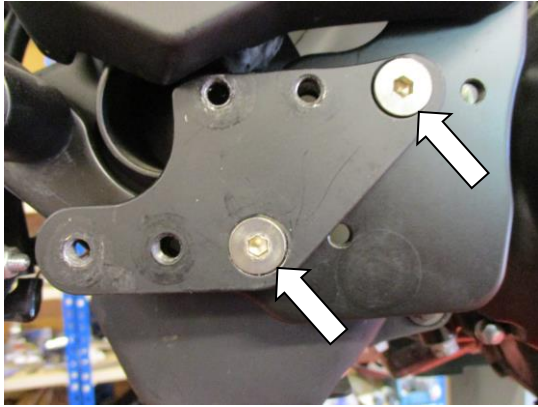


PICTURE 4

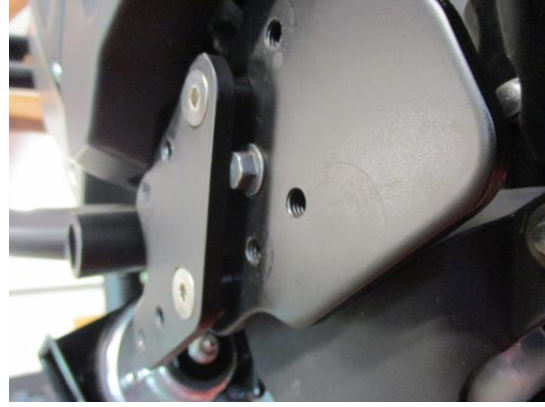
R&G Racing

Unit 1 Shelleys Lane, East Worldham, Alton, Hants GU34 3AQ

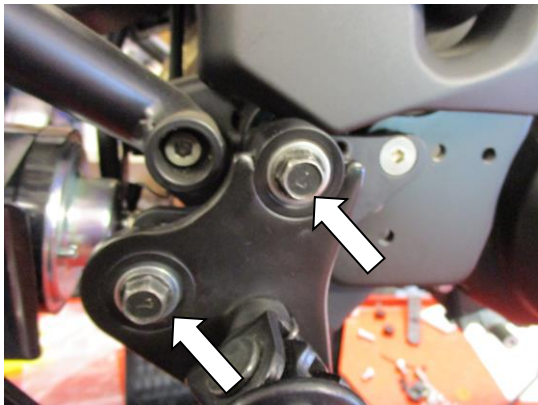
Tel: +44 (0)1420 89007 Fax: +44 (0)1420 87301 www.rg-racing.com Email: info@rg-racing.com



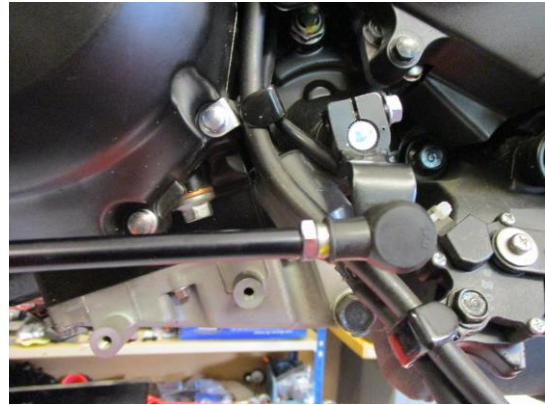
PICTURE 5



PICTURE 6



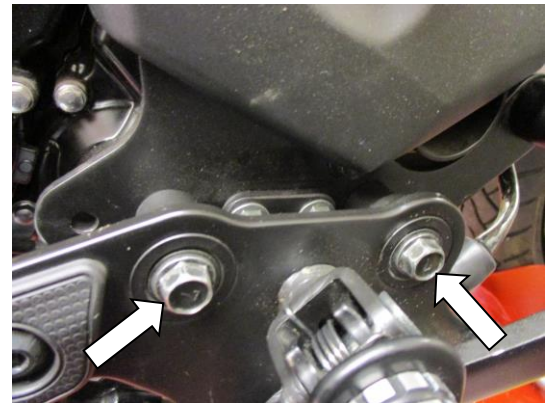
PICTURE 7



PICTURE 8



PICTURE 9

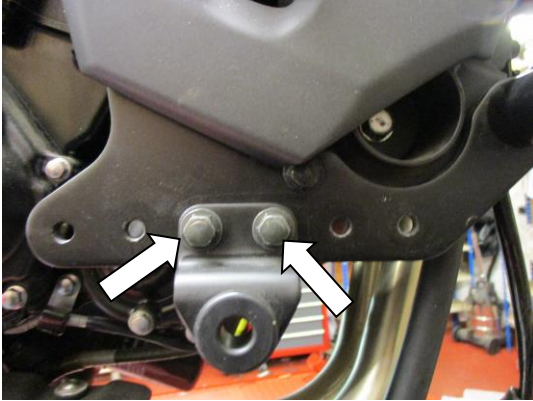


PICTURE 10

R&G Racing

Unit 1 Shelleys Lane, East Worldham, Alton, Hants GU34 3AQ

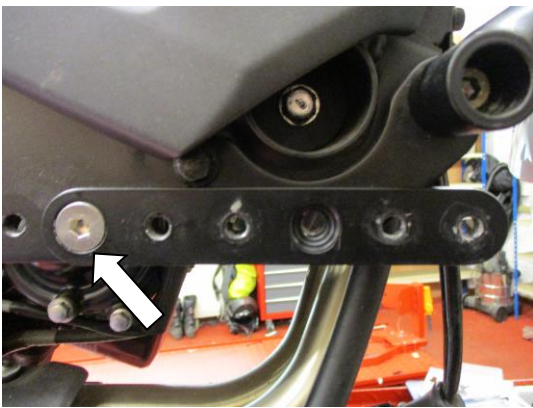
Tel: +44 (0)1420 89007 Fax: +44 (0)1420 87301 www.rg-racing.com Email: info@rg-racing.com



PICTURE 11



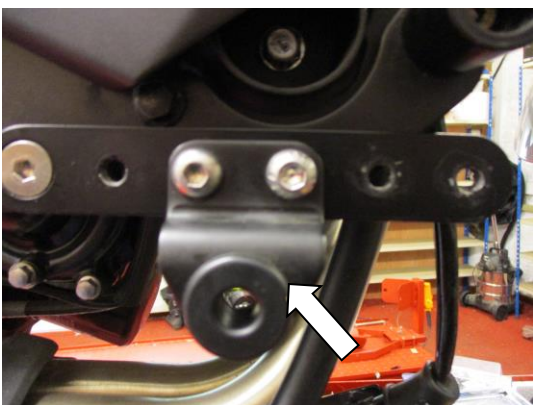
PICTURE 12



PICTURE 13



PICTURE 14



PICTURE 15

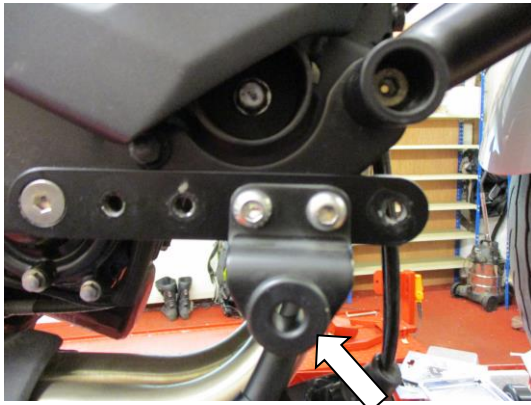


PICTURE 16

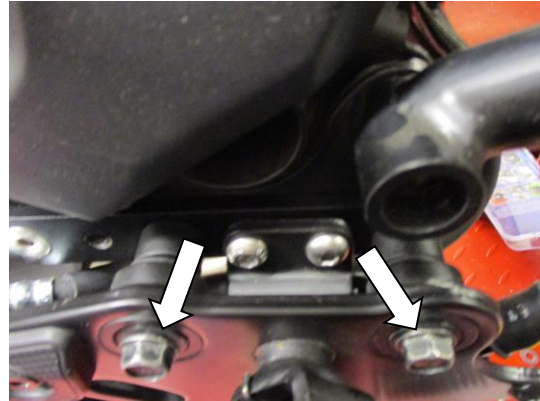
R&G Racing

Unit 1 Shelleys Lane, East Worldham, Alton, Hants GU34 3AQ

Tel: +44 (0)1420 89007 Fax: +44 (0)1420 87301 www.rg-racing.com Email: info@rg-racing.com



PICTURE 17



PICTURE 18

FITTING INSTRUCTIONS

Near side (left side as you sit on bike)

- Remove the two bolts arrowed in picture 1 and gently lower the gear shift/foot rest bracket assembly.
- Place the two M8x20mm long counter-sunk bolts (item 3) into shaped left hand side mounting plate (item 1) as shown in picture 3.
- Place the two mounting plate spacers over the exposed end of the bolts as shown in picture 4.
- Mount this assembly as shown in pictures 5 and 6 (you have a choice of three positions to suit comfort and operation, so you may be required to try all positions to find the optimum).
- Remount and tighten the original gear shift/foot rest bracket assembly (reuse the original spacers) as shown in picture 7 (again you have two different mounting positions to suit comfort and operation).
- Loosen the two lock nuts arrowed in pictures 8 and 9 (the nut in picture 8 is a left hand thread) and remove the original gear shift rod.
- Depending on the required position of the gear shift lever replace the gear shift rod with the longer or shorter new gear shift rods (items 4 or 5) and adjust to suit.
- Please tighten all nuts and bolts and check operation before use.

Off side (right side as you sit on bike)

- Remove the two bolts arrowed in picture 10 and gently lower the brake/foot rest bracket assembly.
- Remove the two bolts arrowed in picture 11 and remove the brake/foot rest bracket assembly support bracket.
- Place one of the M8x12mm long counter-sunk bolts (item 7) into right hand side mounting plate (item 6) as shown in picture 12.
- Mount the plate as shown in picture 13 (you have a choice of two positions to suit comfort and operation, so you may be required to try all positions to find the optimum).
- Depending on which position you select, place one of the M8x20 and one of the M8x12mm long button head bolts (items 8 and 9) into the brake/foot rest bracket assembly support bracket as shown in picture 14 or 16.
- Refit the brake/foot rest bracket assembly support bracket as shown in pictures 15 or 17.
- Remove the two original bolts from the brake/foot rest bracket assembly as arrowed in picture 18 and place the two washers (item 10) onto the bolts and replace as original, through the bracket and spacers.

R&G Racing

Unit 1 Shelleys Lane, East Worldham, Alton, Hants GU34 3AQ

Tel: +44 (0)1420 89007 Fax: +44 (0)1420 87301 www.rg-racing.com Email: info@rg-racing.com



- Remount and tighten the original brake/foot rest bracket assembly (reuse the original spacers) as shown in picture 18 (again you have two different mounting positions to suit comfort and operation).
- Please tighten all nuts and bolts and check operation before use (please ensure the brake lines are free to operate correctly).

CONSUMER NOTICE

The catalogue description and any exhibition of samples are only broad indications of the Products and R&G may make design changes which do not diminish their performance or visual appeal and supplying them in such state shall conform to the order. The Buyer acknowledges no representation or warranty (other than as to title) has been given or will apply to the Products other than those in R&G's order or confirmation and the Buyer confirms it has chosen the Products as being of merchantable quality and suitable for its particular purposes. Where R&G fits the Products or undertakes other services it shall exercise reasonable skill and care and rectify any fault free of charge unless the workmanship has been disturbed. The Buyer is responsible for ensuring that the warranty on the motorcycle is not affected by the fitting of the Products. On return of any defective Products R&G shall at its option either supply a replacement or refund the purchase money but shall not be liable if the Products have been modified or used or maintained otherwise than in accordance with R&G's or manufacturer's instructions and good engineering practice or if the defect arises from accident or neglect. Other than identified above and subject to R&G not limiting its liability for causing death and personal injury, it shall not be liable for indirect or consequential loss and otherwise its liability shall be limited to the amounts paid by the Buyer for the Products or the fitting or service concerned. These terms do not affect the Buyer's statutory rights.

R&G RACING RETURNS POLICY (NON-FAULTY GOODS)

Returns must be pre-authorised (if not pre-authorised the return will be rejected). Goods may only be returned direct to us if they were purchased direct from us (customer must prove if necessary). Otherwise to be returned to original vendor. Goods must be in re-sellable condition, in the opinion of R&G Racing. All returns are subject to a 25% restocking and handling fee (25% of the gross value exc. P&P – at the prevailing price at time of purchase). The customer must pay any and all carriage charges. No returns of discontinued products, unless within 14 days of purchase. This policy does not affect your statutory rights and does not refer to faulty goods.

R&G Racing

Unit 1 Shelleys Lane, East Worldham, Alton, Hants GU34 3AQ

Tel: +44 (0)1420 89007 Fax: +44 (0)1420 87301 www.rg-racing.com Email: info@rg-racing.com



NOTICE DE MONTAGE AFC0001 CALLE PIED AJUSTABLE
KAWASAKI VULCAN 'S' 2015-

Page | 8



PHOTO 'A'



PHOTO 'B'

Le kit contient les articles exposés ci-dessous, vérifier que toutes les pièces soient présentes avant de procéder au montage.

La façon dont le kit est emballé ne correspond pas forcément à la façon de monter les pièces sur la moto.

Notez que si les kits sont emballés avec des rondelles en caoutchouc servant à tenir les composants, *ces rondelles doivent être jetées.*

LES PARTIES PRESENTEES PEUVENT ETRE UNIQUEMENT REPRESENTATIVES (POUR LA CLARTE DES INSTRUCTIONS UNIQUEMENT

Notice disponible au téléchargement sur www.rg-racing.com

REGLAGES DE COUPLE

M4 BOULON = 8Nm
 M5 BOULON = 12Nm
 M6 BOULON = 15Nm
 M8 BOULON = 20Nm
 M10 BOULON = 40Nm

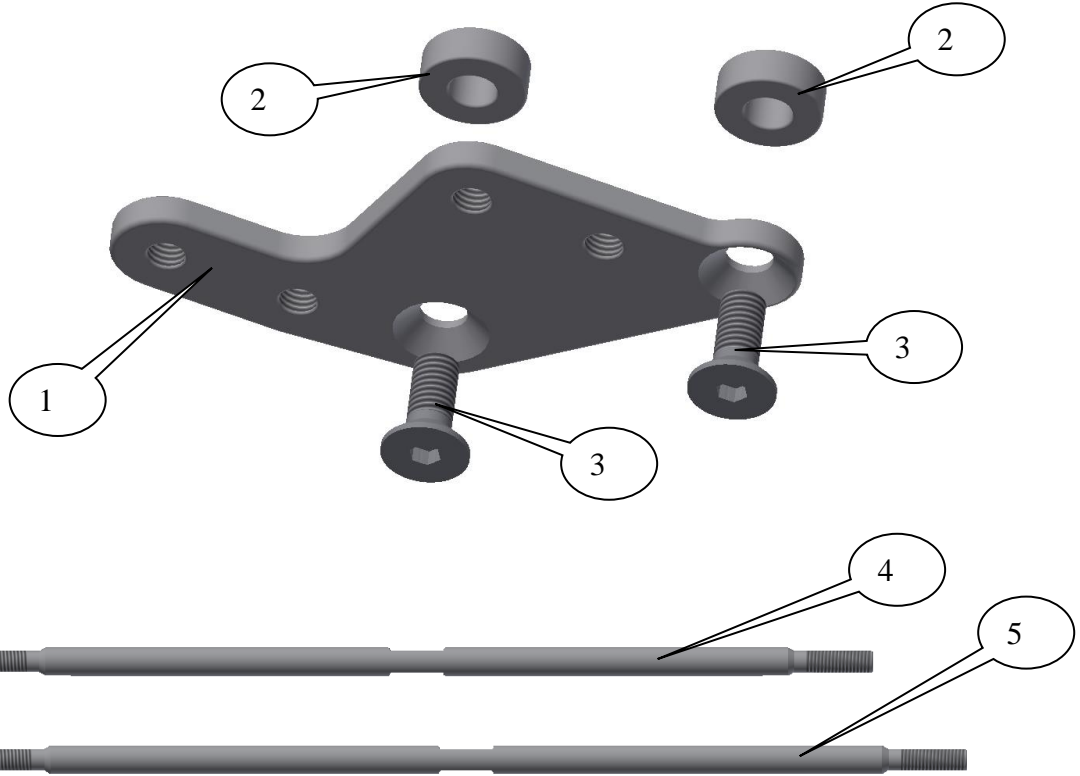
OUTILS REQUIS

- Clés à cliquet 10 et 12mm
 - Clés Allen 5mm A/F.
 - Clé à molette 10mm.
- Clé dynamométrique (à 20Nm).

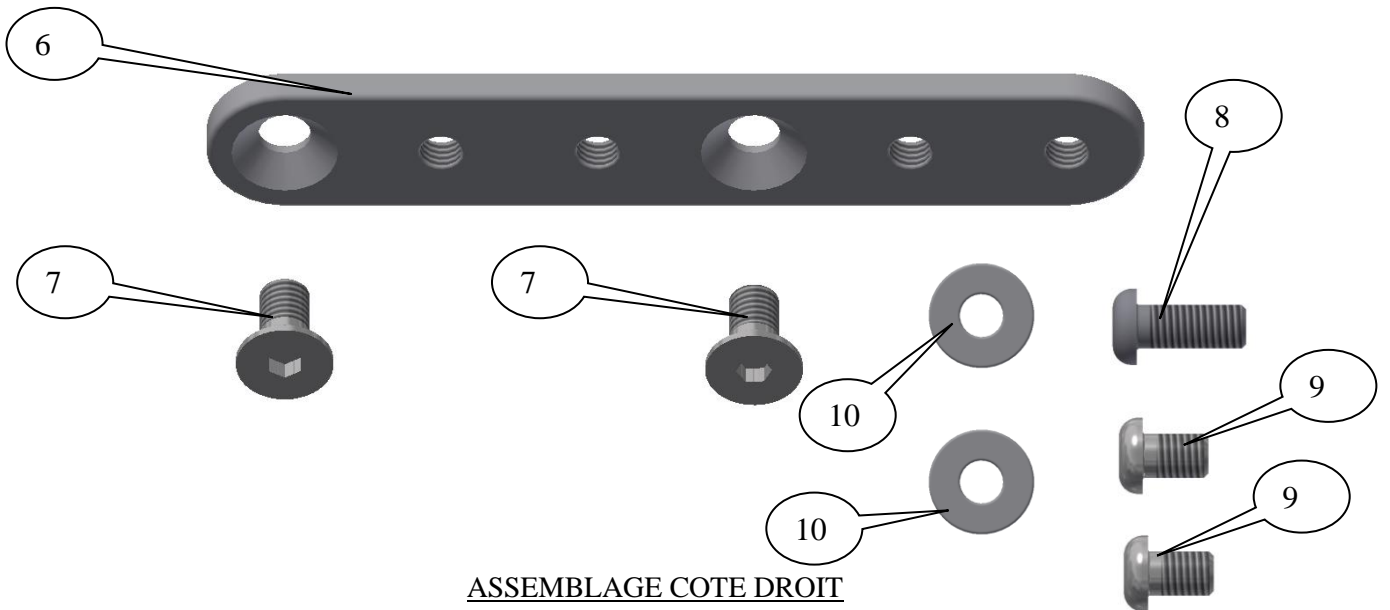
R&G Racing

Unit 1 Shelleys Lane, East Worldham, Alton, Hants GU34 3AQ

Tel: +44 (0)1420 89007 Fax: +44 (0)1420 87301 www.rg-racing.com Email: info@rg-racing.com



ASSEMBLAGE COTE GAUCHE



ASSEMBLAGE COTE DROIT

R&G Racing

Unit 1 Shelleys Lane, East Worldham, Alton, Hants GU34 3AQ

Tel: +44 (0)1420 89007 Fax: +44 (0)1420 87301 www.rg-racing.com Email: info@rg-racing.com



LEGENDE

ARTICLE 1 = PLAQUE DE FIXATION COTE GAUCHE (PLAQUE 0170) (x1).

ARTICLE 2 = ENTRETOISES DE PLAQUE DE FIXATION (S0919) (x2).

ARTICLE 3 = M8x20mm BOULONS (GAUCHE) (x2).

ARTICLE 4 = TRINGLE DE LEVIER DE VITESSE (255mm DE LONG) (SB0117) (x1).

ARTICLE 5 = TRINGLE DE LEVIER DE VITESSE (280mm DE LONG) (SB0118) (x1).

ARTICLE 6 = PLAQUE DE FIXATION COTE DROIT (PLAQUE 0171) (x1).

ARTICLE 7 = M8x12mm BOULONS (DROIT) (x2).

ARTICLE 8 = M8x20mm BOULON (DROIT) (x1).

ARTICLE 9 = M8x12mm BOULONS (DROIT) (x2).

ARTICLE 10 = M8 RONDELLES (x2).

Page | 10



PHOTO 1



PHOTO 2



PHOTO 3



PHOTO 4

R&G Racing

Unit 1 Shelleys Lane, East Worldham, Alton, Hants GU34 3AQ

Tel: +44 (0)1420 89007 Fax: +44 (0)1420 87301 www.rg-racing.com Email: info@rg-racing.com

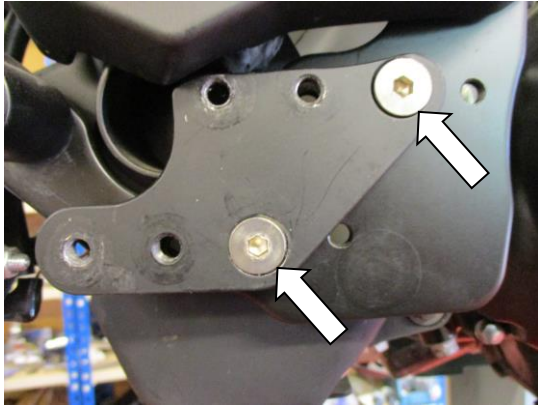


PHOTO 5

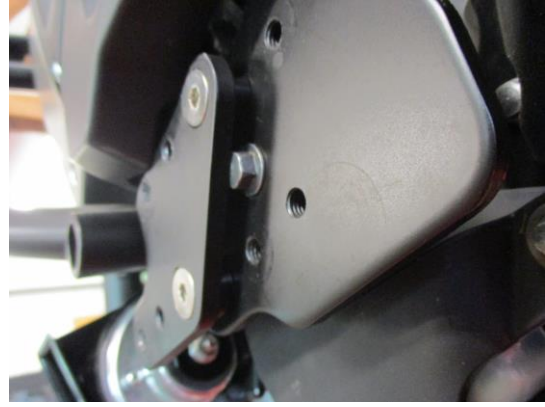


PHOTO 6

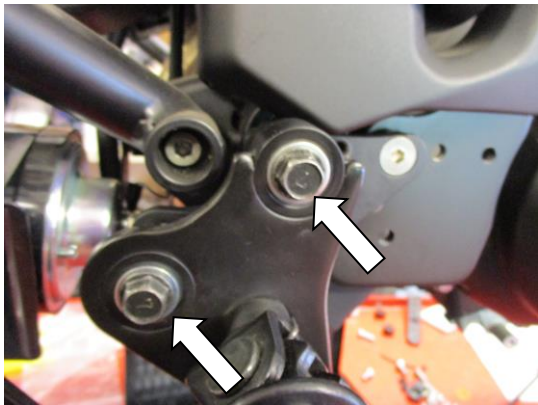


PHOTO 7

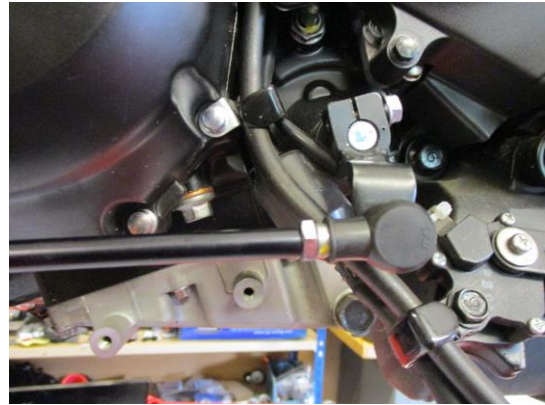


PHOTO 8



PHOTO 9

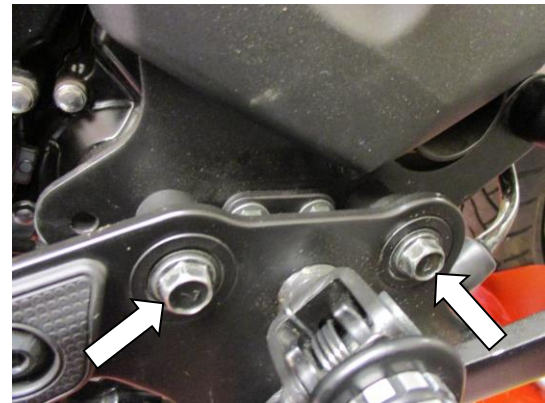


PHOTO 10

R&G Racing

Unit 1 Shelleys Lane, East Worldham, Alton, Hants GU34 3AQ

Tel: +44 (0)1420 89007 Fax: +44 (0)1420 87301 www.rg-racing.com Email: info@rg-racing.com

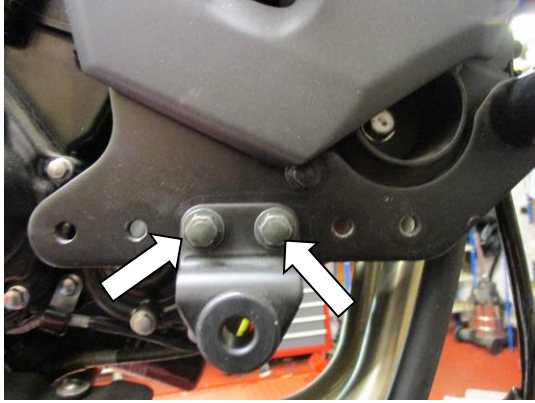


PHOTO 11



PHOTO 12

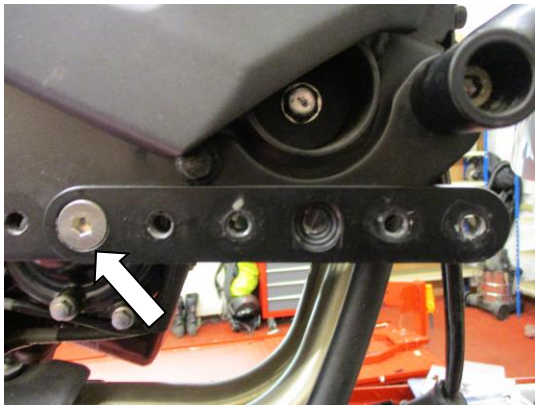


PHOTO 13



PHOTO 14

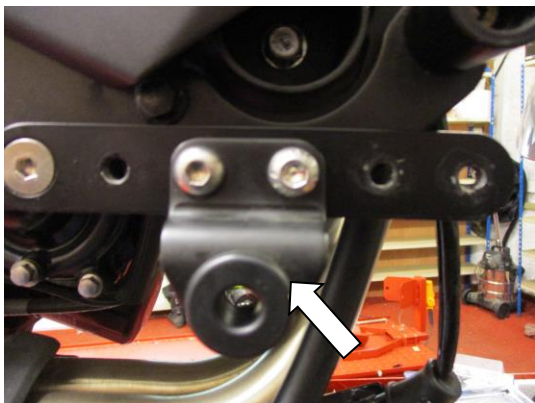


PHOTO 15



PHOTO 16

R&G Racing

Unit 1 Shelleys Lane, East Worldham, Alton, Hants GU34 3AQ

Tel: +44 (0)1420 89007 Fax: +44 (0)1420 87301 www.rg-racing.com Email: info@rg-racing.com



PHOTO 17

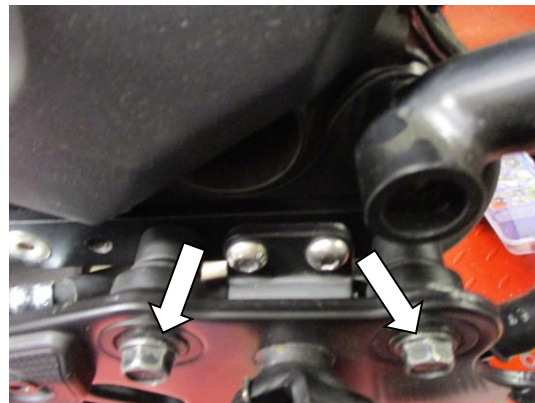


PHOTO 18

INSTRUCTIONS DE MONTAGE

Coté gauche (Assis sur la moto)

- Enlever les 2 boulons indiqués sur la photo 1 et abaisser le levier de vitesse/ support repose pied.
- Placer les 2 boulons M8x20mm (article 3) dans la plaque de fixation du coté gauche (article 1) voir photo 3.
- Placer les 2 entretoises de fixation sur l'extrémité des boulons, voir photo 4.
- Monter l'ensemble, voir photos 5 et 6 (Vous avez le choix entre 3 positions pour votre confort, donc essayez plusieurs positions et choisissez la plus adéquate selon vos attentes).
- Remonter puis serrer le levier de vitesse d'origine/ support repose pied (Réutilisez les entretoises d'origine) voir photo 7 (Vous disposez de 2 positions pour votre confort).
- Desserrer les 2 écrous de blocage, voir photos 8 et 9 (L'écrou de la photo 8 possède un filetage du coté gauche) puis enlever la rotule de levier de vitesse d'origine.
- Selon la position requise du levier de vitesse, remplacez la rotule de levier de vitesse par la nouvelle rotule de levier la plus longue/courte (articles 4 or 5) et ajuster à votre convenance..
- Serrer tous les écrous et boulons, puis vérifier que tout fonctionne correctement avant usage.

Coté droit (Assis sur la moto)

- Enlever les 2 boulons indiqués sur la photo 10 et abaisser le levier de vitesse/ support repose pied.
- Enlever les 2 boulons indiqués sur la photo 11 et enlever le support de frein/ repose pied.
- Placer un boulon M8x12mm (article 7) dans la plaque de fixation du coté droit (article 6) voir photo 12.
- Monter le plaque, voir photo 13 (Vous avez le choix entre 2 positions pour votre confort, donc essayez plusieurs positions et choisissez la plus adéquate selon vos attentes).
- Selon la position sélectionnée, placer un boulon M8x20 et un boulon M8x12mm (articles 8 et 9) dans le support de frein/repose pied, voir photo 14 ou 16.
- Remonter le support de frein / repose pied, voir photos 15 or 17.
- Enlever les 2 boulons d'origine du support de frein/ repose pied, voir photo 18 et placer les 2 rondelles (article 10) sur les boulons puis repositionner comme à l'origine, à travers le support et les entretoises.
- Remonter puis serrer le levier de frein/repose pied d'origine (Réutilisez les entretoises d'origine) voir photo 18 (Vous disposez de 2 positions pour votre confort)..
- Serrer tous les écrous et boulons, puis vérifier que tout fonctionne correctement avant usage.

R&G Racing

Unit 1 Shelleys Lane, East Worldham, Alton, Hants GU34 3AQ

Tel: +44 (0)1420 89007 Fax: +44 (0)1420 87301 www.rg-racing.com Email: info@rg-racing.com



ISSUE 1 19/04/2016 (NSY)

CONSUMER NOTICE

Page | 14

The catalogue description and any exhibition of samples are only broad indications of the Products and R&G may make design changes which do not diminish their performance or visual appeal and supplying them in such state shall conform to the order. The Buyer acknowledges no representation or warranty (other than as to title) has been given or will apply to the Products other than those in R&G's order or confirmation and the Buyer confirms it has chosen the Products as being of merchantable quality and suitable for its particular purposes. Where R&G fits the Products or undertakes other services it shall exercise reasonable skill and care and rectify any fault free of charge unless the workmanship has been disturbed. The Buyer is responsible for ensuring that the warranty on the motorcycle is not affected by the fitting of the Products. On return of any defective Products R&G shall at its option either supply a replacement or refund the purchase money but shall not be liable if the Products have been modified or used or maintained otherwise than in accordance with R&G's or manufacturer's instructions and good engineering practice or if the defect arises from accident or neglect. Other than identified above and subject to R&G not limiting its liability for causing death and personal injury, it shall not be liable for indirect or consequential loss and otherwise its liability shall be limited to the amounts paid by the Buyer for the Products or the fitting or service concerned. These terms do not affect the Buyer's statutory rights.

R&G RACING RETURNS POLICY (NON-FAULTY GOODS)

Returns must be pre-authorized (if not pre-authorized the return will be rejected). Goods may only be returned direct to us if they were purchased direct from us (customer must prove if necessary). Otherwise to be returned to original vendor. Goods must be in re-sellable condition, in the opinion of R&G Racing. All returns are subject to a 25% restocking and handling fee (25% of the gross value exc. P&P – at the prevailing price at time of purchase). The customer must pay any and all carriage charges. No returns of discontinued products, unless within 14 days of purchase. This policy does not affect your statutory rights and does not refer to faulty goods.

R&G Racing

Unit 1 Shelleys Lane, East Worldham, Alton, Hants GU34 3AQ

Tel: +44 (0)1420 89007 Fax: +44 (0)1420 87301 www.rg-racing.com Email: info@rg-racing.com